



Civil & Structural Engineering Design Services Pty. Ltd.

Client: **Extreme Marquees**

Project: Design check – 15m, 12m & 10m X 5m Bay modular Event Deluxe 2 Tent for
80km/hr Wind Speed.

Reference: Extreme Marquees' Technical Data

Report by: KZ
Checked by: EAB
Date: 07/02/2019

JOB NO: D-11-266927-1



Table of Contents

1	Introduction	3
2	Design Restrictions and Limitations	4
3	Specifications	5
3.1	General	5
3.2	Aluminium Properties	6
3.3	Buckling Constants	6
3.4	Section Properties.....	7
4	Design Loads.....	8
4.1	Ultimate.....	8
4.2	Load Combinations	8
4.2.1	Serviceability	8
4.2.2	Ultimate.....	8
5	Wind Analysis.....	8
5.1	Parameters.....	8
5.2	Pressure Coefficients (C_{fig}).....	8
5.2.1	Pressure summary.....	16
5.3	Wind Load Diagrams	17
5.3.1	Wind 1(case 1).....	17
5.3.2	Wind 1(case 2).....	17
5.3.3	Wind 2(Case1).....	18
5.3.4	Wind 2(case 2).....	18
5.3.5	Max Bending Moment due to critical load combination in major axis.....	19
5.3.6	Max Bending Moment in minor axis due to critical load combination	19
5.3.7	Max Shear in due to critical load combination	20
5.3.8	Max Axial force in upright support and roof beam due to critical load combination	20
5.3.9	Max reactions	21
5.3.10	Summary Table:	21
6	Checking Members Based on AS1664.1 ALUMINIUM LSD.....	22
6.1	Rafter.....	22
6.2	Upright Supports	26
6.3	Gable Pole	30
6.4	Gable Beam.....	34
6.5	Ridge & Eave Purlin	38
6.6	Gable Beam.....	42
6.7	Intermediate Purlin.....	47
6.8	Brace	51
7	Summary	56
7.1	Conclusions	56
8	Appendix A – Base Anchorage Requirements	57
9	Appendix B – Hold Down Method Details	58



Civil & Structural Engineering Design Services Pty. Ltd.

1 Introduction

This 'Certification' is the sole property for copyright to Mr. Ted Bennett of Civil & Structural Engineering Design Services Pty. Ltd. and the license holder for the exclusive use of this Certification, Extreme Marquees.

The following structural drawings and calculations are for the transportable tents supplied by Extreme Marquees.

The frame consists principally of extruded '6061-T6' aluminium components with hot dipped galvanized steel ridge and knee connection inserts and base plate.

The report examines the effect of 3s gust wind of 80 km/hr on 15m × 20m Event Deluxe 2 Tent as the worst-case scenario. The relevant Australian Standards AS1170.0:2002 General principles, AS1170.1:2002 Permanent, imposed and other actions and AS1170.2:2011 Wind actions are used. The design check is in accordance with AS/NZS 1664.1:1997 Aluminum limit state design.



2 Design Restrictions and Limitations

- 2.1 The erected structure is for temporary use only.
- 2.2 It should be noted that if high gust wind speeds are anticipated or forecast in the locality of the tent, the temporary erected structure should be dismantled.
- 2.3 For forecast winds in excess of (**refer to summary**) – all fabric shall be removed from the frames, and the structure should be completely dismantled.
(Please note that the locality squall or gust wind speed is affected by factors such as terrain exposure and site elevations.)
- 2.4 The structure may only be erected in regions with wind classifications no greater than the limits specified on the attached wind analysis.
- 2.5 The wind classifications are based upon Terrain Category 2. Considerations have also been made to the regional wind terrain category, topographical location and site shielding from adjacent structures. Please note that in many instances topographical factors such as a location on the crest of a hill or on top of an escarpment may yield a higher wind speed classification than that derived for a higher wind terrain category in a level topographical region. For this reason, particular regard shall be paid to the topographical location of the structure. For localities which do not conform to the standard prescribed descriptions for wind classes as defined above, a qualified Structural Engineer may be employed to determine an appropriate wind class for that the particular site.
- 2.6 The structures in no circumstances shall ever be erected in tropical or severe tropical cyclonic condition as defined on the Map of Australia in AS 1170.2-2011, Figure 3.1.
- 2.7 The tent structure has not been designed to withstand snow and ice loadings such as when erected in alpine regions.
- 2.8 For the projects, where the site conditions approach the design limits, extra consideration should be given to pullout tests of the stakes and professional assessment of the appropriate wind classification for the site.
- 2.9 The tents are stabilized as using roof/wall cross bracing at each end bay and every third bay in between to resist against lateral movement due to wind direction1.
- 2.10 It is important to use 60x60x2.5 profile for all intermediate purlins with spacing not exceeding 2000mm. This means 6 intermediate purlins are required per bay for the 15m tent structure.



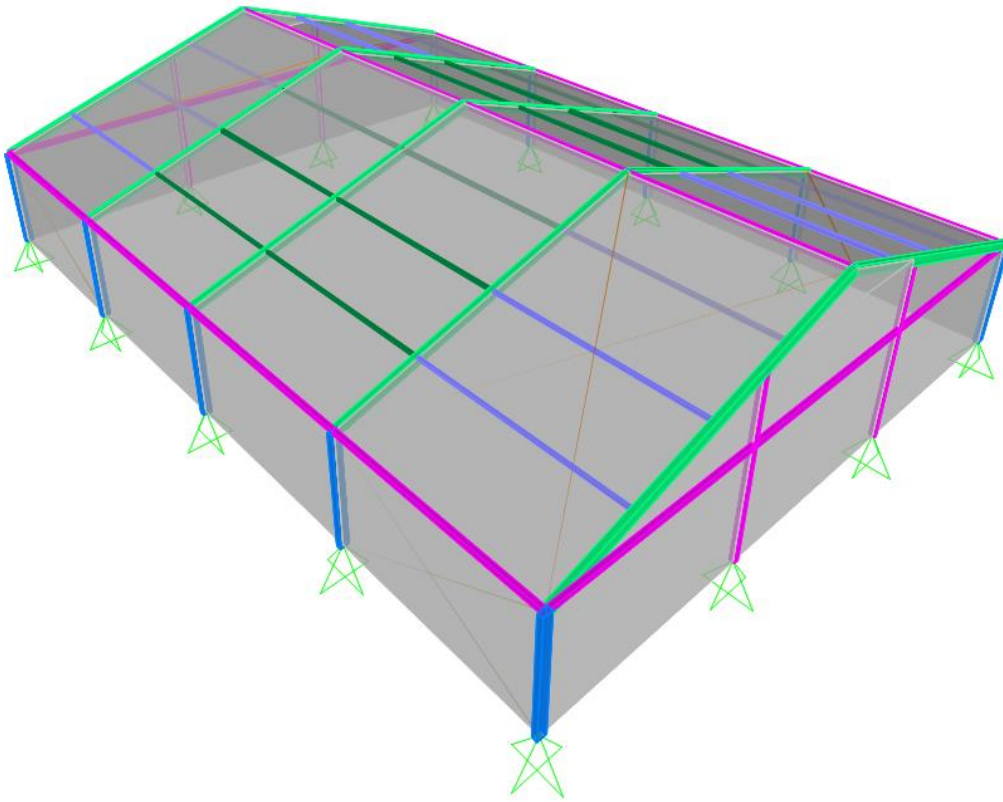
Civil & Structural Engineering Design Services Pty. Ltd.

3 Specifications

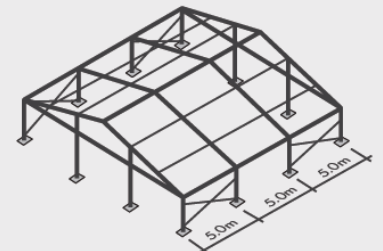
3.1 General

Tent category	
Material	Aluminum 6061-T6

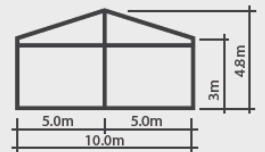
Size	Model
15m x 20m	Event Deluxe 2



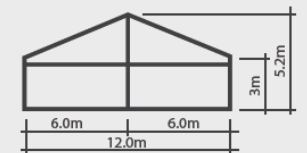
TECHNICAL DIAGRAMS



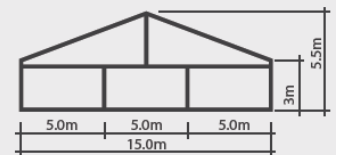
Type:
10m Span



Type:
12m Span



Type:
15m Span





Civil & Structural Engineering Design Services Pty. Ltd.

3.2 Aluminium Properties

Aluminium Properties		
Compressive yield strength	Fcy	241 MPa
Tensile yield strength	Fty	241 MPa
Tensile ultimate strength	Ftu	262 MPa
Shear yield strength	Fsy	138 MPa
Bearing yield strength	Fby	386 MPa
Bearing ultimate strength	Fbu	552 MPa
Yield stress (min{Fcy:Fty})	Fy	241 MPa
Elastic modulus	E	70000 MPa
Shear modulus	G	26250 MPa
Value of coefficients	kt	1.00
	kc	1.00
Capacity factor (general yield)	ϕ_y	0.95
Capacity factor (ultimate)	ϕ_u	0.85
Capacity factor (bending)	ϕ_b	0.85
Capacity factor (elastic shear buckling)	ϕ_v	0.8
Capacity factor (inelastic shear buckling)	ϕ_{vp}	0.9

3.3 Buckling Constants

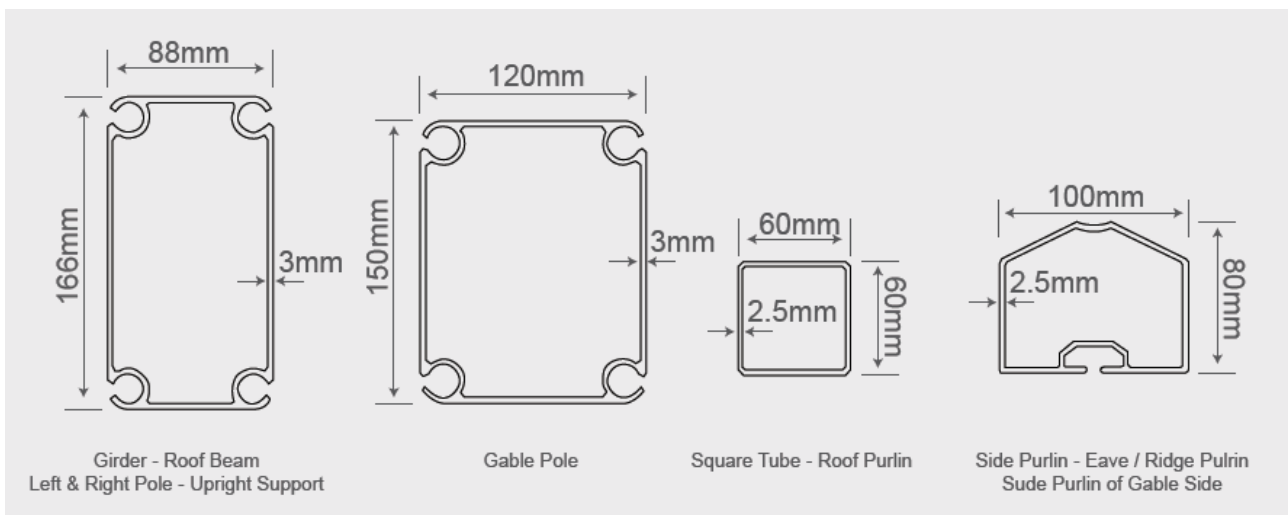
Type of member and stresses	Intercept, MPa	Slope, MPa	Intersection
Compression in columns and beam flanges	BC= 242.87	Dc= 1.43	Cc= 69.61
Compression in flat plates	Bp= 310.11	Dp= 2.06	Cp= 61.60
Compressive bending stress in solid rectangular bars	Bbr= 459.89	Dbr= 4.57	Cbr= 67.16
Compressive bending stress in round tubes	Btb= 250.32	Dtb= 14.18	Ctb= 183.52
Shear stress in flat plates	Bs= 178.29	Ds= 0.90	Cs= 81.24



Civil & Structural Engineering Design Services Pty. Ltd.

3.4 Section Properties

MEMBER(S)	Section	b	d	t	y _c	A _g	Z _x	Z _y	S _x	S _y	I _x	I _y	J	r _x	r _y
		mm	mm	mm	mm	mm ²	mm ³	mm ³	mm ³	mm ³	mm ⁴	mm ⁴	mm ⁴	mm	mm
Rafter	166x88x3	88	166	3	83.0	1488.0	66933.8	47169.5	81432.0	52416.0	5555504.0	2075456.0	4644218.3	61.1	37.3
Upright Support	166x88x3	88	166	3	83.0	1488.0	66933.8	47169.5	81432.0	52416.0	5555504.0	2075456.0	4644218.3	61.1	37.3
Gable Pole	150x120x3	120	150	3	75.0	1584.0	71775.4	63691.2	84024.0	72144.0	5383152.0	3821472.0	6722854.6	58.3	49.1
Gable Beam	80x100x2.5	100	80	2.5	40.0	875.0	23170.6	26161.5	26406.3	30781.3	926822.9	1308072.9	1631340.4	32.5	38.7
Eave & Ridge Beam	80x100x2.5	100	80	2.5	40.0	875.0	23170.6	26161.5	26406.3	30781.3	926822.9	1308072.9	1631340.4	32.5	38.7
Purlin	60x60x2.5	60	60	2.5	30.0	575.0	10581.6	10581.6	12406.3	12406.3	317447.9	317447.9	475273.4	23.5	23.5
Brace	80x80x3	80	80	3	40.0	924.0	22861.3	22861.3	26694.0	26694.0	914452.0	914452.0	1369599.0	31.5	31.5





Civil & Structural Engineering Design Services Pty. Ltd.

4 Design Loads

4.1 Ultimate

		Distributed load (kPa)	Design load factor (-)	Factored imposed load (kPa)
Live	Q	-	1.5	-
Self weight	G	self weight	1.35, 1.2, 0.9	1.2 self weight, 0.9 self weight
3s 80km/hr gust	W	$0.245 C_{fig}$	1.0	$0.245 C_{fig}$

4.2 Load Combinations

4.2.1 Serviceability

Gravity = $1.0 \times G$

Wind = $1.0 \times G + 1.0 \times W$

4.2.2 Ultimate

Downward = $1.35 \times G$
 = $1.2 \times G + W_u$
 = $1.2 \times G + W_u + W_{ls}$

Upward = $0.9 \times G + W_u$
 = $0.9 \times G + W_u + W_{IP}$

5 Wind Analysis

Wind towards surface (+ve), away from surface (-ve)

5.1 Parameters

Terrain category = 2

Site wind speed ($V_{sit,\beta}$) = $V_R M_d (M_{z,cat} M_s M_t)$

$V_R = 22.22 \text{ m/s}$ (80 km/hr)

(regional 3 s gust wind speed)

$M_d = 1$

$M_s = 1$

$M_t = 1$

$M_{z,cat} = 0.91$

(Table 4.1(B) AS1170.2)

$V_{sit,\beta} = 20.22 \text{ m/s}$

Height of structure (h) = 4.25 m

(mid of peak and eave)

Width of structure (w) = 15 m

Length of structure (l) = 20 m

Pressure (P) = $0.5 \rho_{air} (V_{sit,\beta})^2 C_{fig} C_{dyn}$
 = $0.245 C_{fig} \text{ kPa}$

5.2 Pressure Coefficients (C_{fig})

Name	Symbol	Value	Unit	Notes	Ref.
------	--------	-------	------	-------	------



Civil & Structural Engineering Design Services Pty. Ltd.

Input				
Importance level		2		Table 3.1 - Table 3.2 (AS1170.0)
Annual probability of exceedance		Temporary		Table 3.3
Regional gust wind speed		80	Km/hr	Table 3.1
Regional gust wind speed	V_R	22.22	m/s	Table 3.2 (AS1170.2)
Wind Direction Multipliers	M_d	1		Table 4.1
Terrain Category Multiplier	$M_{Z,Cat}$	0.91		
Shield Multiplier	M_s	1		4.3 (AS1170.2)
Topographic Multiplier	M_t	1		4.4 (AS1170.2)
Site Wind Speed	$V_{Site,\beta}$	20.22	m/s	$V_{Site,\beta} = V_R * M_d * M_{Z,Cat} * M_s * M_t$
Pitch	α	18	Deg	
Pitch	α	0.314	rad	
Width	B	15	m	
Width Span	S_w	5	m	
Length	D	20	m	
Height	Z	4.25	m	
Bay Span		5	m	
Purlin Spacing		2	m	
Number of Intermediate Purlin		6		
	h/d	0.21		
	h/b	0.28		
Wind Pressure				
ρ_{air}	ρ	1.2	Kg/m ³	
dynamic response factor	C_{dyn}	1		
Wind Pressure	$\rho * C_{fig}$	0.245	Kg/m ²	$\rho = 0.5 \rho_{air} * (V_{des,\beta})^2 * C_{fig} * C_{dyn}$ 2.4 (AS1170.2)
WIND DIRECTION 1 (Perpendicular to Length)				
Internal Pressure				



Civil & Structural Engineering Design Services Pty. Ltd.

Opening Assumption

With Dominant Opening ($C_{pi} = nC_{pe}$)

Internal Pressure Coefficient
(Without Dominant) **MIN**

-0.1

Table 5.1 A

Internal Pressure Coefficient
(Without Dominant) **MAX**

0.2

Internal Pressure Coefficient
(With Dominant) **MIN**

-0.1

Table 5.1B

Internal Pressure Coefficient
(With Dominant) **MAX**

0.2

N

0.5

$C_{pi} = N * C_{pe}$

Combination Factor

$K_{C,i}$

1

Internal Pressure Coefficient
MIN

$C_{p,i}$

0.50

Internal Pressure Coefficient
MAX

$C_{p,i}$

0.50

External Pressure

1. Windward Wall

External Pressure Coefficient

$C_{p,e}$

0.7

Table 5.2 A

Area Reduction Factor

K_a

1

Table 5.4

combination factor applied to
internal pressures

$K_{C,e}$

0.8

local pressure factor

K_l

1

porous cladding reduction factor

K_p

1

aerodynamic shape factor

$C_{fig,e}$

0.56

Wind Wall Pressure

P

0.14

kPa

Edge Column Force

F

0.34

kN/m

Intermediate Column Force

F

0.69

kN/m

2. Leeward Wall

External Pressure Coefficient

$C_{p,e}$

-0.36

Table 5.2 B

Area Reduction Factor

K_a

1

Table 5.4

combination factor applied to
internal pressures

$K_{C,e}$

0.8

local pressure factor

K_l

1



Civil & Structural Engineering Design Services Pty. Ltd.

porous cladding reduction factor	K_p	1	
aerodynamic shape factor	$C_{fig,e}$	-0.288	
Lee Wall Pressure	P	-0.07	kPa
Edge Column Force	F	-0.18	kN/m
Intermediate Column Force	F	-0.35	kN/m

Table 5.2 C

3. Side Wall

Area Reduction Factor	K_a	1	
combination factor applied to internal pressures	$K_{C,e}$	0.8	
local pressure factor	K_l	1	
porous cladding reduction factor	K_p	1	
External Pressure Coefficient	$C_{P,e}$	-0.65	0 to 1h
External Pressure Coefficient	$C_{P,e}$	-0.5	1h to 2h
External Pressure Coefficient	$C_{P,e}$	-0.3	2h to 3h
External Pressure Coefficient	$C_{P,e}$	-0.2	>3h
aerodynamic shape factor	$C_{fig,e}$	-0.52	0 to 1h
aerodynamic shape factor	$C_{fig,e}$	-0.4	1h to 2h
aerodynamic shape factor	$C_{fig,e}$	-0.24	2h to 3h
aerodynamic shape factor	$C_{fig,e}$	-0.16	>3h
Side Wall Pressure	P	-0.13	kPa
Side Wall Pressure	P	-0.10	kPa
Side Wall Pressure	P	-0.06	kPa
Side Wall Pressure	P	-0.04	kPa

Table 5.4

4. Roof Up Wind Slope

Area Reduction Factor	K_a	1	
combination factor applied to internal pressures	$K_{C,e}$	0.8	
local pressure factor	K_l	1	
porous cladding reduction factor	K_p	1	
External Pressure Coefficient MIN	$C_{P,e}$	-0.38	
External Pressure Coefficient MAX	$C_{P,e}$	0.12	
aerodynamic shape factor MIN	$C_{fig,e}$	-0.30	
aerodynamic shape factor MAX	$C_{fig,e}$	0.10	
Pressure MIN	P	-0.07	kPa
Pressure MAX	P	0.02	kPa

$\alpha > 10^\circ$

Table 5.3 B



Civil & Structural Engineering Design Services Pty. Ltd.

Edge Rafter Force MIN	F	-0.19	kN/m
Edge Rafter Force Max	F	0.06	kN/m
Intermediate Rafter Force MIN	F	-0.37	kN/m
Intermediate Rafter Force MAX	F	0.12	kN/m

5. Roof Down Wind Slope

Area Reduction Factor	K_a	1
combination factor applied to internal pressures	$K_{C,e}$	0.8
local pressure factor	K_l	1
porous cladding reduction factor	K_p	1
External Pressure Coefficient	$C_{P,e}$	-0.56
aerodynamic shape factor	$C_{fig,e}$	-0.448

Table 5.3C

Pressure MIN	P	-0.11	kPa
Pressure MAX	P	-0.11	kPa

Edge Rafter Force MIN	F	-0.27	kN/m
Edge Rafter Force MAX	F	-0.27	kN/m
Intermediate Rafter Force MIN	F	-0.55	kN/m
Intermediate Rafter Force MAX	F	-0.55	kN/m

WIND DIRECTION 2 (Parallel to Length)

Internal Pressure

Opening Assumption With Dominant Opening ($C_{pi} = nC_{pe}$)



Internal Pressure Coefficient
(Without Dominant) **MIN**

-0.1

Table 5.1A

Internal Pressure Coefficient
(Without Dominant) **MAX**

0.2

Internal Pressure Coefficient
(With Dominant) **MIN**

-0.1

Table 5.1B

Internal Pressure Coefficient
(With Dominant) **MAX**

0.2

N

0.5

$C_{pi} = N * C_{pe}$

Combination Factor

$K_{C,i}$

1



Civil & Structural Engineering Design Services Pty. Ltd.

Internal Pressure Coefficient MIN	$C_{p,i}$	0.50		
Internal Pressure Coefficient MAX	$C_{p,i}$	0.50		
External Pressure				
1. Windward Wall				Table 5.2 A
External Pressure Coefficient	$C_{p,e}$	0.7		
Area Reduction Factor	K_a	1		Table 5.4
combination factor applied to internal pressures	$K_{C,e}$	0.8		
local pressure factor	K_l	1		
porous cladding reduction factor	K_p	1		
aerodynamic shape factor	$C_{fig,e}$	0.56		
Wind Wall Pressure	P	0.14	kPa	
Edge Column Force	F	0.34	kN/m	
Intermediate Column Force	F	0.69	kN/m	
2. Leeward Wall				Table 5.2 B
External Pressure Coefficient	$C_{p,e}$	-0.5		
Area Reduction Factor	K_a	1		Table 5.4
combination factor applied to internal pressures	$K_{C,e}$	0.8		
local pressure factor	K_l	1		
porous cladding reduction factor	K_p	1		
aerodynamic shape factor	$C_{fig,e}$	-0.4		
Lee Wall Pressure	P	-0.10	kPa	
Edge Column Force	F	-0.25	kN/m	
Intermediate Column Force	F	-0.49	kN/m	
3. Side Wall				Table 5.2 C
Area Reduction Factor	K_a	1		Table 5.4
combination factor applied to internal pressures	$K_{C,e}$	0.8		
local pressure factor	K_l	1		
porous cladding reduction factor	K_p	1		
External Pressure Coefficient	$C_{p,e}$	-0.65		0 to 1h
External Pressure Coefficient	$C_{p,e}$	-0.5		1h to 2h



Civil & Structural Engineering Design Services Pty. Ltd.

External Pressure Coefficient	$C_{P,e}$	-0.3		2h to 3h
External Pressure Coefficient	$C_{P,e}$	-0.2		>3h
aerodynamic shape factor	$C_{fig,e}$	-0.52		0 to 1h
aerodynamic shape factor	$C_{fig,e}$	-0.4		1h to 2h

Side Wall Pressure	P	-0.13	kPa	0 to 1h
--------------------	----------	--------------	------------	---------

Side Wall Pressure	P	-0.10	kPa	1h to 2h
Side Wall Pressure	P	-0.06	kPa	2h to 3h
Side Wall Pressure	P	-0.04	kPa	>3h

4. Roof

$\alpha < 10^\circ$

Area Reduction Factor	K_a	1		
combination factor applied to internal pressures	$K_{C,e}$	0.8		
local pressure factor	K_l	1		
porous cladding reduction factor	K_p	1		
External Pressure Coefficient MIN	$C_{P,e}$	-0.90		0 to 0.5h
External Pressure Coefficient MIN	$C_{P,e}$	-0.90		0.5 to 1h
External Pressure Coefficient MIN	$C_{P,e}$	-0.50		1h to 2h
External Pressure Coefficient MIN	$C_{P,e}$	-0.30		2h to 3h
External Pressure Coefficient MIN	$C_{P,e}$	-0.20		>3h

External Pressure Coefficient MAX	$C_{P,e}$	-0.40		0 to 0.5h
External Pressure Coefficient MAX	$C_{P,e}$	-0.40		0.5 to 1h
External Pressure Coefficient MAX	$C_{P,e}$	0.00		1h to 2h
External Pressure Coefficient MAX	$C_{P,e}$	0.10		2h to 3h
External Pressure Coefficient MAX	$C_{P,e}$	0.20		>3h

aerodynamic shape factor MIN	$C_{fig,e}$	-0.72		0 to 0.5h
aerodynamic shape factor MIN	$C_{fig,e}$	-0.72		0.5 to 1h
aerodynamic shape factor MIN	$C_{fig,e}$	-0.4		1h to 2h

Table 5.3 A



Civil & Structural Engineering Design Services Pty. Ltd.

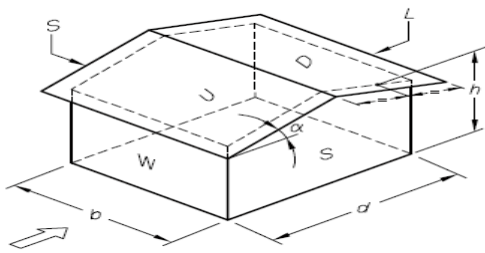
aerodynamic shape factor MIN	$C_{fig,e}$	-0.24		2h to 3h
aerodynamic shape factor MIN	$C_{fig,e}$	-0.16		>3h
aerodynamic shape factor MAX	$C_{fig,e}$	-0.32		0 to 0.5h
aerodynamic shape factor MAX	$C_{fig,e}$	-0.32		0.5 to 1h
aerodynamic shape factor MAX	$C_{fig,e}$	0		1h to 2h
aerodynamic shape factor MAX	$C_{fig,e}$	0.08		2h to 3h
aerodynamic shape factor MAX	$C_{fig,e}$	0.16		>3h
Pressure MIN	P	-0.18	kPa	0 to 0.5h
Pressure MIN	P	-0.18	kPa	0.5 to 1h
Pressure MIN	P	-0.10	kPa	1h to 2h
Pressure MIN	P	-0.06	kPa	2h to 3h
Pressure MIN	P	-0.04	kPa	>3h
Pressure MAX	P	-0.08	kPa	0 to 0.5h
Pressure MAX	P	-0.08	kPa	0.5 to 1h
Pressure MAX	P	0.00	kPa	1h to 2h
Pressure MAX	P	0.02	kPa	2h to 3h
Pressure MAX	P	0.04	kPa	>3h
Edge Purlin Force MIN	F	-0.18	kN/m	0 to 0.5h
Edge Purlin Force MIN	F	-0.18	kN/m	0.5 to 1h
Edge Purlin Force MIN	F	-0.10	kN/m	1h to 2h
Edge Purlin Force MIN	F	-0.06	kN/m	2h to 3h
Edge Purlin Force MIN	F	-0.04	kN/m	>3h
Edge Purlin Force MAX	F	-0.08	kN/m	0 to 0.5h
Edge Purlin Force MAX	F	-0.08	kN/m	0.5 to 1h
Edge Purlin Force MAX	F	0.00	kN/m	1h to 2h
Edge Purlin Force MAX	F	0.02	kN/m	2h to 3h
Edge Purlin Force MAX	F	0.04	kN/m	>3h
Intermediate Purlin Force MIN	F	-0.35	kN/m	0 to 0.5h
Intermediate Purlin Force MIN	F	-0.35	kN/m	0.5 to 1h
Intermediate Purlin Force MIN	F	-0.20	kN/m	1h to 2h
Intermediate Purlin Force MIN	F	-0.12	kN/m	2h to 3h
Intermediate Purlin Force MIN	F	-0.08	kN/m	>3h
Intermediate Purlin Force MAX	F	-0.16	kN/m	0 to 0.5h
Intermediate Purlin Force MAX	F	-0.16	kN/m	0.5 to 1h
Intermediate Purlin Force MAX	F	0.00	kN/m	1h to 2h
Intermediate Purlin Force MAX	F	0.04	kN/m	2h to 3h
Intermediate Purlin Force MAX	F	0.08	kN/m	>3h



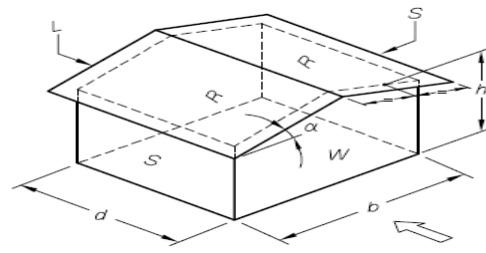
Civil & Structural Engineering Design Services Pty. Ltd.

5.2.1 Pressure summary

WIND EXTERNAL PRESSURE			Direction1 (Perpendicular to Length)		Direction2 (Parallel to Length)				
Windward (kPa)			0.14		0.14				
Leeward (kPa)			-0.07		-0.10				
Sidewall (m)	Length	(m)	(m)	(Kpa)	(Kpa)				
	0 - 1h	0	3.9	-0.13	-0.13				
	1h - 2h	3.9	7.8	-0.10	-0.10				
	2h - 3h	7.8	11.7	-0.06	-0.06				
	>3h	11.7	-	-0.04	-0.04				
Roof			Min (Kpa)	Max (Kpa)	Length	(m)	(m)	Min (Kpa)	Max (Kpa)
	Upwind Slope		-0.07	0.02	0-0.5h	0.00	1.95	-0.18	-0.08
	Downwind Slope		-0.11	-0.11	0.5h-1h	1.95	3.90	-0.18	-0.08
					1h-2h	3.90	7.80	-0.10	0.00
					2h-3h	7.80	11.70	-0.06	0.02
					>3h	11.70	-	-0.04	0.04
	Wind Internal Pressure (kPa)		Min (kPa)	Max (kPa)	Min (kPa)			Max (kPa)	
Proportion of Cpe			Proportion of Cpe	Proportion of Cpe			Proportion of Cpe		



Direction 1



Direction 2

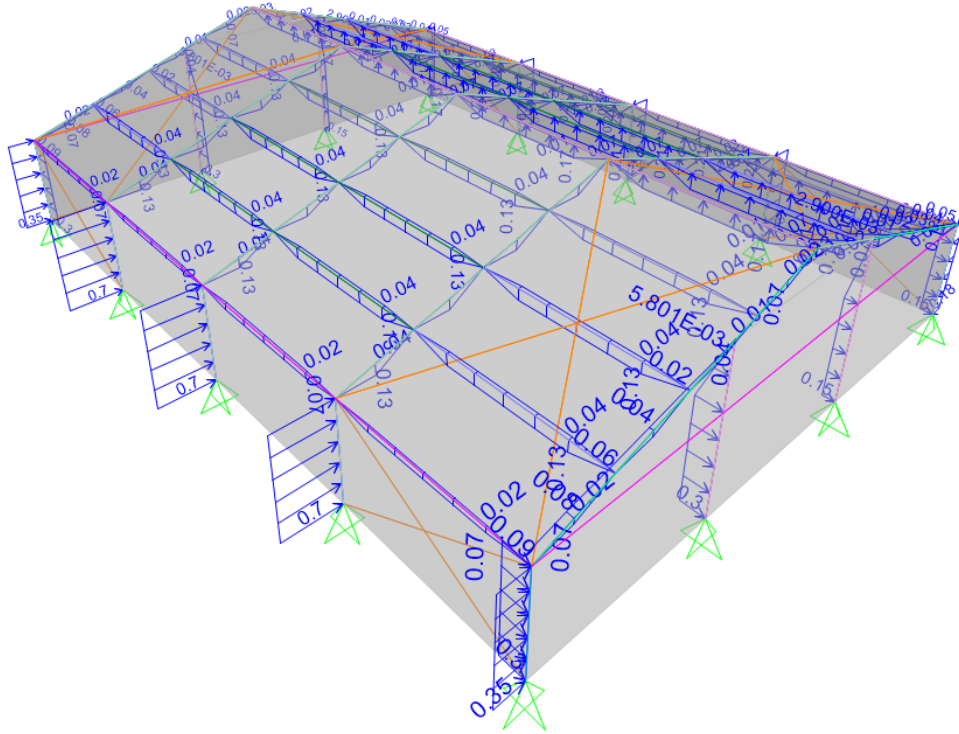
AS1170.2



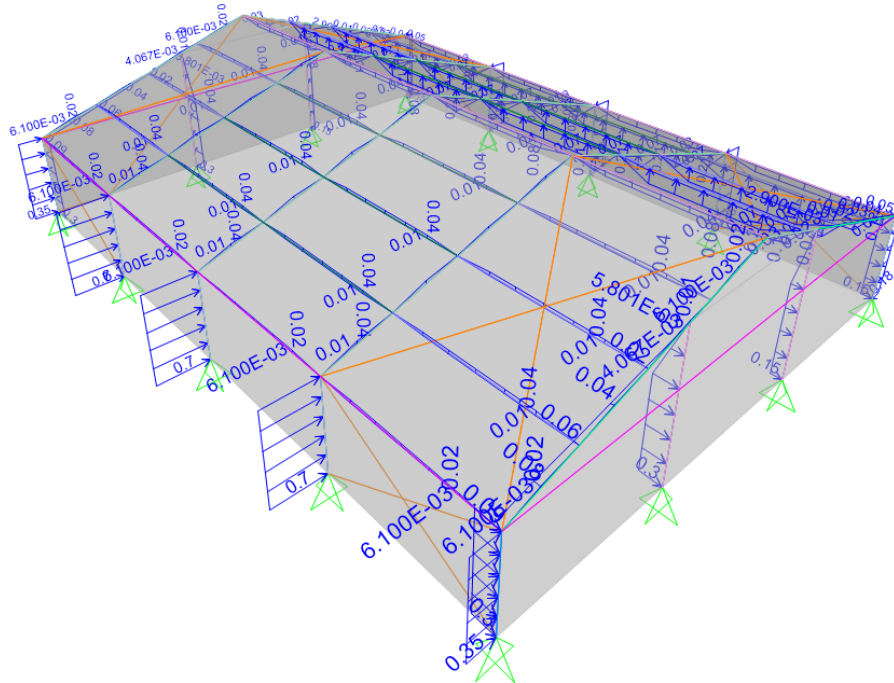
Civil & Structural Engineering Design Services Pty. Ltd.

5.3 Wind Load Diagrams

5.3.1 Wind 1(case 1)



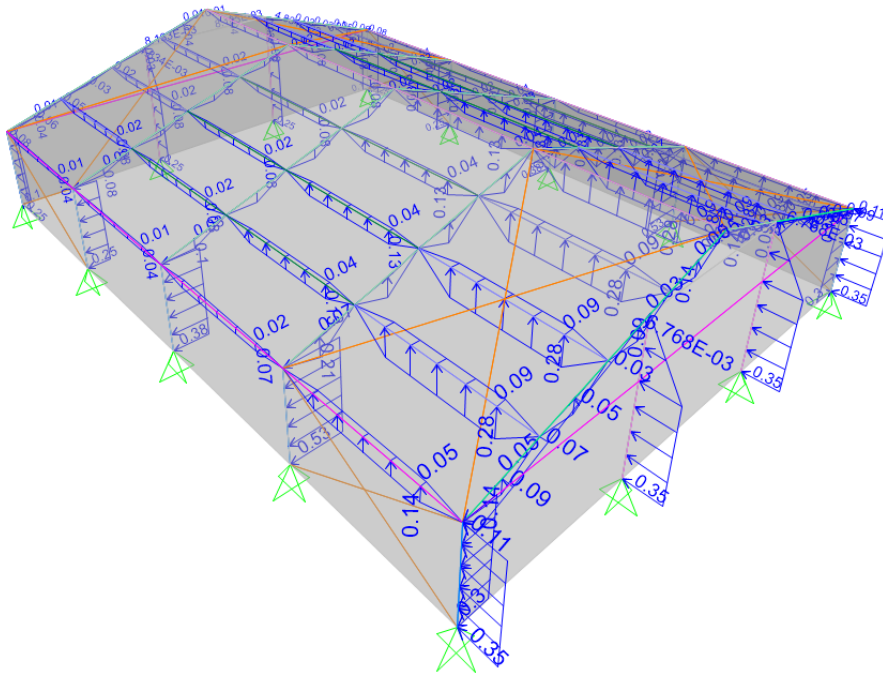
5.3.2 Wind 1(case 2)



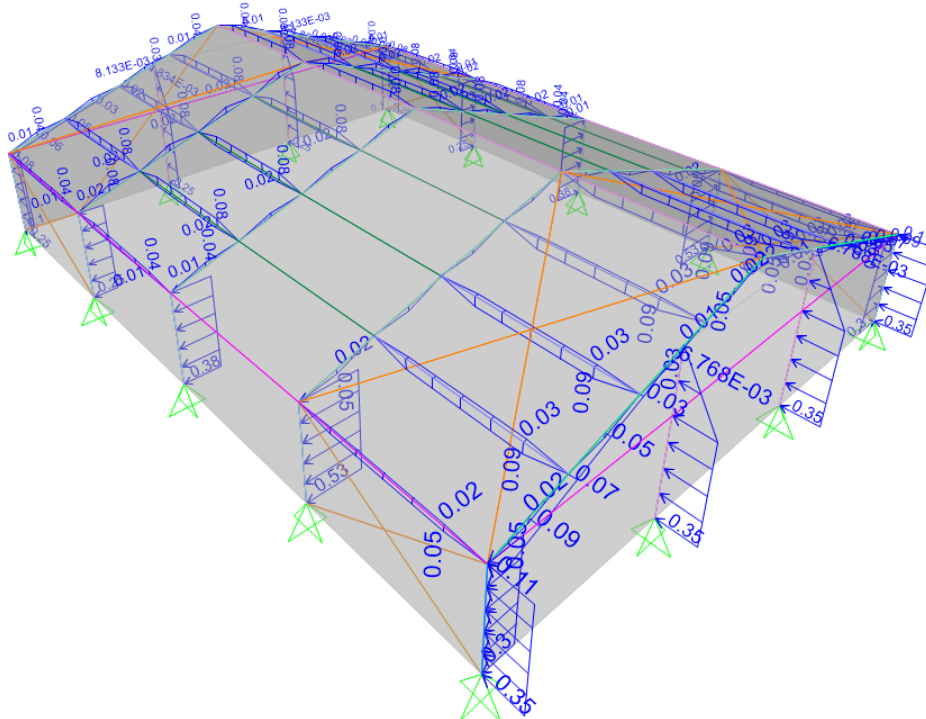


Civil & Structural Engineering Design Services Pty. Ltd.

5.3.3 Wind 2(Case1)



5.3.4 Wind 2(case 2)



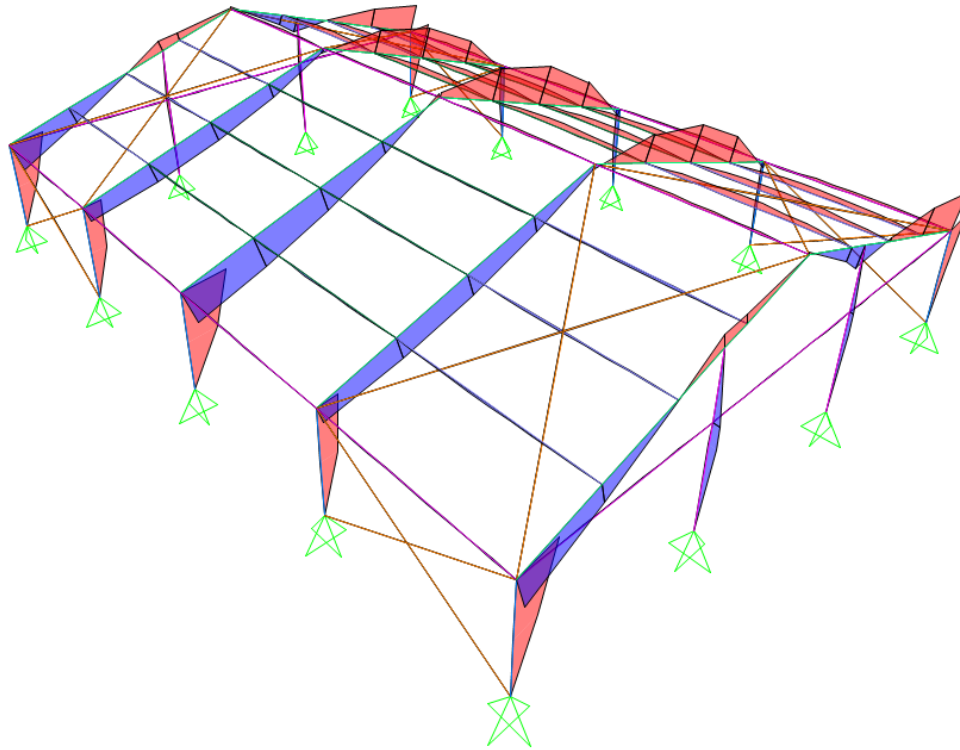
After 3D model analysis, each member is checked based on adverse load combination.

In this regard the maximum bending moment, shear and axial force due to adverse load combinations for each member are presented as below:

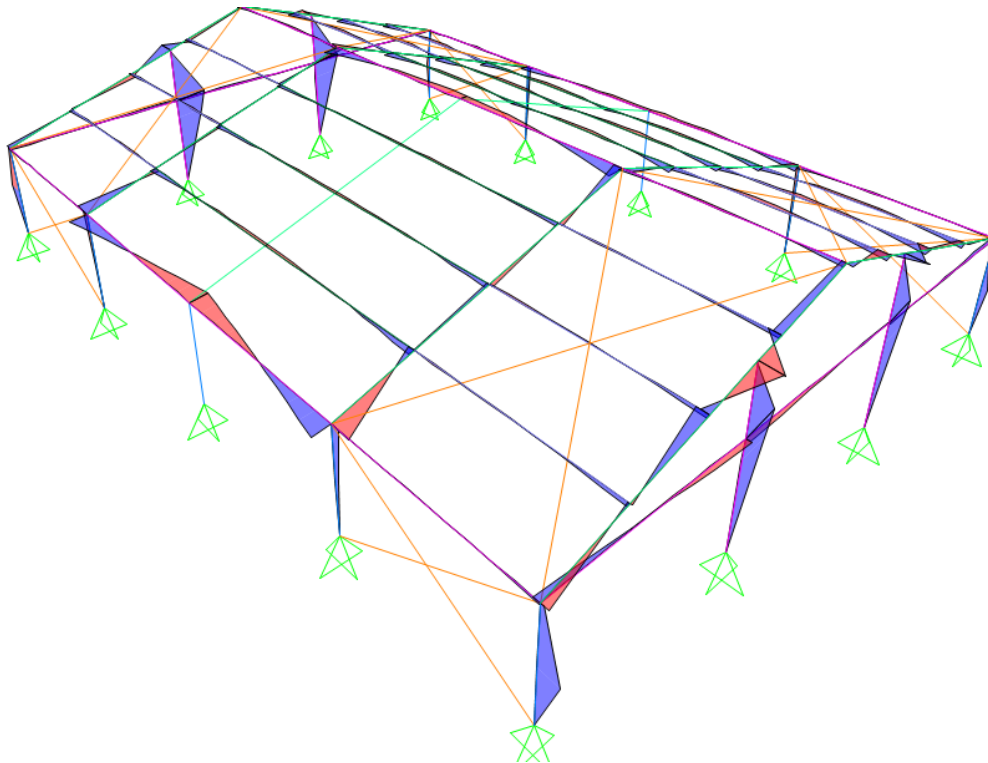


Civil & Structural Engineering Design Services Pty. Ltd.

5.3.5 Max Bending Moment due to critical load combination in major axis



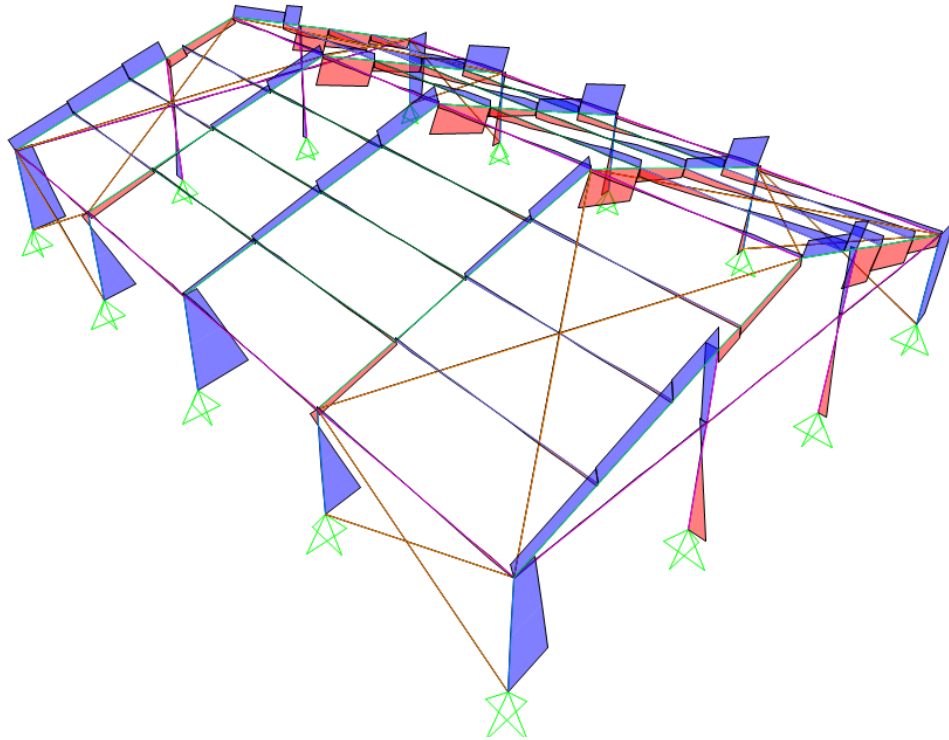
5.3.6 Max Bending Moment in minor axis due to critical load combination



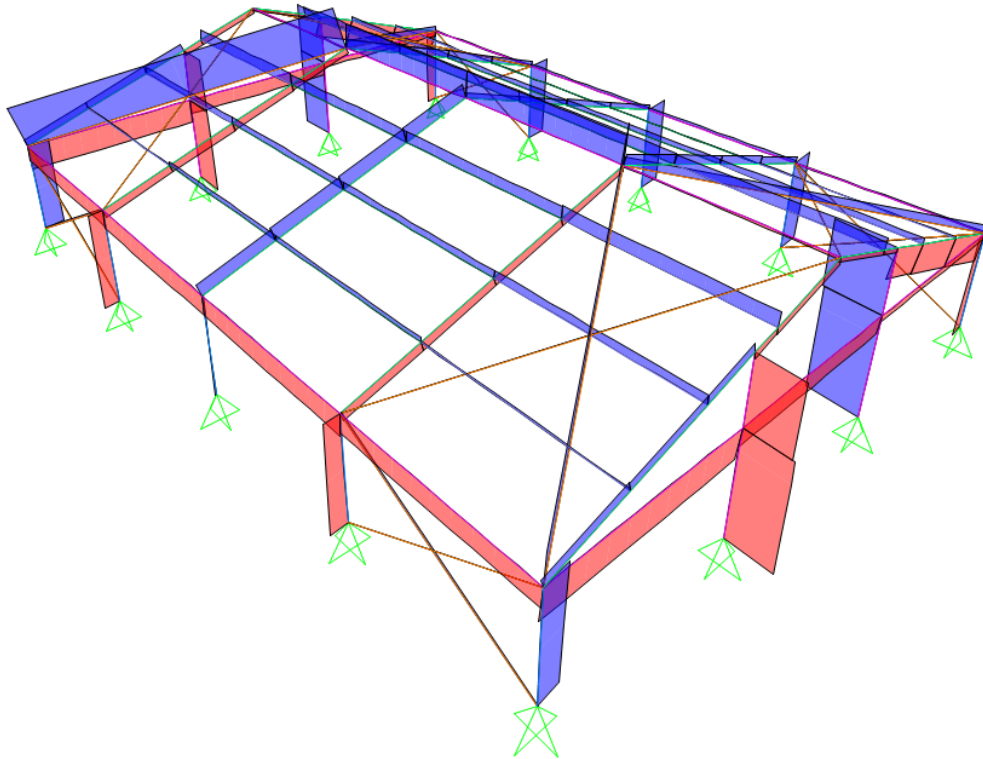


Civil & Structural Engineering Design Services Pty. Ltd.

5.3.7 Max Shear in due to critical load combination



5.3.8 Max Axial force in upright support and roof beam due to critical load combination





Civil & Structural Engineering Design Services Pty. Ltd.

6 Checking Members Based on AS1664.1 ALUMINIUM LSD

6.1 Rafter

NAME	SYMBOL	VALUE	UNIT	NOTES	REF
166x88x3	Rafter				
Alloy and temper	6061-T6				AS1664.1
Tension	F_{tu}	= 262	MPa	Ultimate	T3.3(A)
	F_{ty}	= 241	MPa	Yield	
Compression	F_{cy}	= 241	MPa		
Shear	F_{su}	= 165	MPa	Ultimate	
	F_{sy}	= 138	MPa	Yield	
Bearing	F_{bu}	= 551	MPa	Ultimate	
	F_{by}	= 386	MPa	Yield	
Modulus of elasticity	E	= 70000	MPa	Compressive	
	k_t	= 1.0			T3.4(B)
	k_c	= 1.0			
FEM ANALYSIS RESULTS					
Axial force	P	= 0	kN	compression	
	P	= 3.295	kN	Tension	
In plane moment	M_x	= 8.8623	kNm		
Out of plane moment	M_y	= 1.622E-14	kNm		
DESIGN STRESSES					
Gross cross section area	A_g	= 1488	mm ²		
In-plane elastic section modulus	Z_x	= 66933.78	mm ³		
Out-of-plane elastic section mod.	Z_y	= 47169.45	mm ³		
Stress from axial force	f_a	= P/ A_g			
		= 0.00	MPa	compression	
		= 2.21	MPa	Tension	
Stress from in-plane bending	f_{bx}	= M_x/Z_x			
		= 132.40	MPa	compression	
Stress from out-of-plane bending	f_{by}	= M_y/Z_y			
		= 0.00	MPa	compression	
Tension					
3.4.3 Tension in rectangular tubes					



Civil & Structural Engineering Design Services Pty. Ltd.

	ϕF_L	=	228.95	MPa		
	O					
	R					
	ϕF_L	=	222.70	MPa		
COMPRESSION						
3.4.8 Compression in columns, axial, gross section						
1. General						
Unsupported length of member	L	=	7900	mm		3.4.8.1
Effective length factor	k	=	1			
Radius of gyration about buckling axis (Y)	r_y	=	37.35	mm		
Radius of gyration about buckling axis (X)	r_x	=	61.10	mm		
Slenderness ratio	kL/r_y	=	53.55			
Slenderness ratio	kL/r_x	=	129.29			
Slenderness parameter	λ	=	2.415			
	D_c^*	=	90.3			
	S_1^*	=	0.33			
	S_2^*	=	1.23			
	ϕ_{cc}	=	0.918			
Factored limit state stress	ϕF_L	=	37.94	MPa		
2. Sections not subject to torsional or torsional-flexural buckling						
Largest slenderness ratio for flexural buckling	kL/r	=	129.29			3.4.8.2
3.4.10 Uniform compression in components of columns, gross section - flat plates						
1. Uniform compression in components of columns, gross section - flat plates with both edges supported						
	k_1	=	0.35			3.4.10.1
Max. distance between toes of fillets of supporting elements for plate	b'	=	82			T3.3(D)
	t	=	3	mm		
Slenderness	b/t	=	27.33333			
		=	3			
Limit 1	S_1	=	12.34			
Limit 2	S_2	=	32.87			



Civil & Structural Engineering Design Services Pty. Ltd.

Factored limit state stress	ϕF_L	=	186.87	MPa		
Most adverse compressive limit state stress	F_a	=	37.94	MPa		
Most adverse tensile limit state stress	F_a	=	222.70	MPa		
Most adverse compressive & Tensile capacity factor	f_a/F_a	=	0.01		PASS	
BENDING - IN-PLANE						
3.4.15 <i>Compression in beams, extreme fibre, gross section rectangular tubes, box sections</i>						
Unbraced length for bending	L_b	=	2000	mm		
Second moment of area (weak axis)	I_y	=	2.08E+06	mm ⁴		
Torsion modulus	J	=	4.64E+06	mm ³		
Elastic section modulus	Z	=	66933.78	mm ³		
Slenderness	S	=	86.24			
Limit 1	S_1	=	0.39			
Limit 2	S_2	=	1695.86			
Factored limit state stress	ϕF_L	=	209.08	MPa		3.4.15(2)
3.4.17 <i>Compression in components of beams (component under uniform compression), gross section - flat plates with both edges supported</i>						
	k_1	=	0.5			T3.3(D)
	k_2	=	2.04			T3.3(D)
Max. distance between toes of fillets of supporting elements for plate	b'	=	82	mm		
	t	=	3	mm		
Slenderness	b/t	=	27.33333			
Limit 1	S_1	=	12.34			
Limit 2	S_2	=	46.95			
Factored limit state stress	ϕF_L	=	186.87	MPa		
Most adverse in-plane bending limit state stress	F_{bx}	=	186.87	MPa		



Civil & Structural Engineering Design Services Pty. Ltd.

Most adverse in-plane bending capacity factor	f_{bx}/F_{bx}	=	0.71	PASS	
BENDING - OUT-OF-PLANE					
NOTE: Limit state stresses, ϕF_L are the same for out-of-plane bending (doubly symmetric section)					
Factored limit state stress	ϕF_L	=	186.87 MPa		
Most adverse out-of-plane bending limit state stress	F_{by}	=	186.87 MPa		
Most adverse out-of-plane bending capacity factor	f_{by}/F_{by}	=	0.00	PASS	
COMBINED ACTIONS					
4.1.1 Combined compression and bending					
	F_a	=	37.94 MPa		... 4.1.1(2)
	F_{ao}	=	186.87 MPa		... 3.4.8
	F_{bx}	=	186.87 MPa		... 3.4.10
	F_{by}	=	186.87 MPa		... 3.4.17
	f_a/F_a	=	0.010		... 3.4.17
Check:	$f_a/F_a + f_{bx}/F_{bx} + f_{by}/F_{by} \leq 1.0$... 4.1.1(3)
i.e.	0.72	≤	1.0	PASS	
SHEAR					
3.4.24 Shear in webs (Major Axis)					
Clear web height	h	=	160 mm		... 4.1.1(2)
	t	=	3 mm		
Slenderness	h/t	=	53.33333		
Limit 1	S_1	=	29.01		
Limit 2	S_2	=	59.31		
Factored limit state stress	ϕF_L	=	106.47 MPa		
Stress From Shear force	f_{sx}	=	V/A_w		
			2.25 MPa		
3.4.25 Shear in webs (Minor Axis)					
Clear web height	b	=	82 mm		



Civil & Structural Engineering Design Services Pty. Ltd.

	t	=	3	mm		
Slenderness	b/t	=	$\frac{27.33333}{3}$			
Factored limit state stress	ϕF_L	=	131.10	MPa		
Stress From Shear force	f_{sy}	=	V/A_w			
			0.00	MPa		

6.2 Upright Supports

NAME	SYMBOL	VALUE	UNIT	NOTES	REF
166x88x3	Upright Support				
Alloy and temper	6061-T6				AS1664.1
Tension	F_{tu}	=	262	MPa	T3.3(A)
	F_{ty}	=	241	MPa	
Compression	F_{cy}	=	241	MPa	
Shear	F_{su}	=	165	MPa	Ultimate
	F_{sy}	=	138	MPa	Yield
Bearing	F_{bu}	=	551	MPa	Ultimate
	F_{by}	=	386	MPa	Yield
Modulus of elasticity	E	=	70000	MPa	Compressive
	k_t	=	1.0		T3.4(B)
	k_c	=	1.0		
FEM ANALYSIS RESULTS					
Axial force	P	=	0	kN	compression
	P	=	3.767	kN	Tension
In plane moment	M_x	=	8.9487	kNm	
Out of plane moment	M_y	=	4.319E-15	kNm	
DESIGN STRESSES					
Gross cross section area	A_g	=	1488	mm ²	
In-plane elastic section modulus	Z_x	=	$\frac{66933.78}{3}$	mm ³	
Out-of-plane elastic section mod.	Z_y	=	$\frac{47169.45}{5}$	mm ³	
Stress from axial force	f_a	=	P/A_g		
		=	0.00	MPa	compression



Civil & Structural Engineering Design Services Pty. Ltd.

Stress from in-plane bending	f_{bx}	=	2.53	MPa	Tension	
		=	M_x/Z_x			
Stress from out-of-plane bending	f_{by}	=	133.69	MPa	compression	
		=	M_y/Z_y			
		=	0.00	MPa	compression	
Tension						
3.4.3 Tension in rectangular tubes						
	ϕF_L	=	228.95	MPa		
		O				
	ϕF_L	=	222.70	MPa		
COMPRESSION						
3.4.8 Compression in columns, axial, gross section						
1. General						
Unsupported length of member	L	=	3000	mm		3.4.8.1
Effective length factor	k	=	1			
Radius of gyration about buckling axis (Y)	r_y	=	37.35	mm		
Radius of gyration about buckling axis (X)	r_x	=	61.10	mm		
Slenderness ratio	kLb/r_y	=	80.33			
Slenderness ratio	kL/r_x	=	49.10			
Slenderness parameter	λ	=	1.50			
	D_c^*	=	90.3			
	S_1^*	=	0.33			
	S_2^*	=	1.23			
	ϕ_{cc}	=	0.790			
Factored limit state stress	ϕF_L	=	84.59	MPa		
2. Sections not subject to torsional or torsional-flexural buckling						
Largest slenderness ratio for flexural buckling	kL/r	=	80.33			3.4.8.2
3.4.10 Uniform compression in components of columns, gross section - flat plates						
1. Uniform compression in components of columns, gross section - flat plates with both edges supported						
	k_1	=	0.35			3.4.10.1
						T3.3(D)



Civil & Structural Engineering Design Services Pty. Ltd.

Max. distance between toes of fillets of supporting elements for plate	b'	=	82		
	t	=	3	mm	
Slenderness	b/t	=	27.33333		
Limit 1	S ₁	=	12.34		
Limit 2	S ₂	=	32.87		
Factored limit state stress	ϕF_L	=	186.87	MPa	
Most adverse compressive limit state stress	F _a	=	84.59	MPa	
Most adverse tensile limit state stress	F _a	=	222.70	MPa	
Most adverse compressive & Tensile capacity factor	f _a /F _a	=	0.01		PASS
BENDING - IN-PLANE					
3.4.15 <i>Compression in beams, extreme fibre, gross section rectangular tubes, box sections</i>					
Unbraced length for bending	L _b	=	3000	mm	
Second moment of area (weak axis)	I _y	=	2.08E+06	mm ⁴	
Torsion modulus	J	=	4.64E+06	mm ³	
Elastic section modulus	Z	=	66933.78	mm ³	
Slenderness	S	=	129.36		
Limit 1	S ₁	=	0.39		
Limit 2	S ₂	=	1695.86		
Factored limit state stress	ϕF_L	=	204.30	MPa	3.4.15(2)
3.4.17 <i>Compression in components of beams (component under uniform compression), gross section - flat plates with both edges supported</i>					
	k ₁	=	0.5		T3.3(D)
	k ₂	=	2.04		T3.3(D)
Max. distance between toes of fillets of supporting elements for plate	b'	=	82	mm	
	t	=	3	mm	
Slenderness	b/t	=	27.33333		
Limit 1	S ₁	=	12.34		



Civil & Structural Engineering Design Services Pty. Ltd.

Limit 2	S_2	=	46.95		
Factored limit state stress	ϕF_L	=	186.87 MPa		
Most adverse in-plane bending limit state stress	F_{bx}	=	186.87 MPa		
Most adverse in-plane bending capacity factor	f_{bx}/F_{bx}	=	0.72	PASS	
BENDING - OUT-OF-PLANE					
NOTE: Limit state stresses, ϕF_L are the same for out-of-plane bending (doubly symmetric section)					
Factored limit state stress	ϕF_L	=	186.87 MPa		
Most adverse out-of-plane bending limit state stress	F_{by}	=	186.87 MPa		
Most adverse out-of-plane bending capacity factor	f_{by}/F_{by}	=	0.00	PASS	
COMBINED ACTIONS					
4.1.1 Combined compression and bending					
	F_a	=	84.59 MPa		4.1.1(2) ...
	F_{ao}	=	186.87 MPa		... 3.4.8
	F_{bx}	=	186.87 MPa		... 3.4.10
	F_{by}	=	186.87 MPa		... 3.4.17
	f_a/F_a	=	0.011		... 3.4.17
Check:	$f_a/F_a + f_{bx}/F_{bx} + f_{by}/F_{by} \leq 1.0$... 4.1.1 (3)
i.e.	0.73	≤	1.0	PASS	
SHEAR					
3.4.24 Shear in webs (Major Axis)					
Clear web height	h	=	160 mm		4.1.1(2) ...
	t	=	3 mm		
Slenderness	h/t	=	53.33333		
Limit 1	S_1	=	29.01		
Limit 2	S_2	=	59.31		



Civil & Structural Engineering Design Services Pty. Ltd.

Factored limit state stress	ϕF_L	=	106.47	MPa		
Stress From Shear force	f_{sx}	=	V/A_w			
			2.25	MPa		
3.4.25 Shear in webs (Minor Axis)						
Clear web height	b	=	82	mm		
	t	=	3	mm		
Slenderness	b/t	=	27.33333			
			3			
Factored limit state stress	ϕF_L	=	131.10	MPa		
Stress From Shear force	f_{sy}	=	V/A_w			
			0.00	MPa		

6.3 Gable Pole

NAME	SYMBOL		VALUE	UNIT	NOTES	REF
150x120x3	Gable Pole					
Alloy and temper	6061-T6					AS1664.1
Tension	F _{tu}	=	262	MPa	Ultimate	T3.3(A)
	F _{ty}	=	241	MPa	Yield	
Compression	F _{cy}	=	241	MPa		
Shear	F _{su}	=	165	MPa	Ultimate	
	F _{sy}	=	138	MPa	Yield	
Bearing	F _{bu}	=	551	MPa	Ultimate	
	F _{by}	=	386	MPa	Yield	
Modulus of elasticity	E	=	70000	MPa	Compressive	
	k _t	=	1.0			T3.4(B)
	k _c	=	1.0			
FEM ANALYSIS RESULTS						
Axial force	P	=	4.66	kN	compression	
	P	=	0	kN	Tension	
In plane moment	M _x	=	1.8027	kNm		
Out of plane moment	M _y	=	6.2794	kNm		



Civil & Structural Engineering Design Services Pty. Ltd.

<i>DESIGN STRESSES</i>						
Gross cross section area	A_g	=	1584	mm ²		
In-plane elastic section modulus	Z_x	=	71775.36	mm ³		
Out-of-plane elastic section mod.	Z_y	=	63691.2	mm ³		
Stress from axial force	f_a	=	P/A_g			
		=	2.94	MPa	compression	
		=	0.00	MPa	Tension	
Stress from in-plane bending	f_{bx}	=	M_x/Z_x			
		=	25.12	MPa	compression	
Stress from out-of-plane bending	f_{by}	=	M_y/Z_y			
		=	98.59	MPa	compression	
<i>Tension</i>						
3.4.3 Tension in rectangular tubes						
	ϕF_L	=	228.95	MPa		
		O				
	ϕF_L	=	222.70	MPa		
<i>COMPRESSION</i>						
3.4.8 Compression in columns, axial, gross section						
1. General						... 3.4.8.1
Unsupported length of member	L	=	4620	mm		
Effective length factor	k	=	1			
Radius of gyration about buckling axis (Y)	r_y	=	49.12	mm		
Radius of gyration about buckling axis (X)	r_x	=	58.30	mm		
Slenderness ratio	kLb/r_y	=	61.08			
Slenderness ratio	kL/r_x	=	79.25			
Slenderness parameter	λ	=	1.48			
	D_c^*	=	90.3			
	S_1^*	=	0.33			
	S_2^*	=	1.23			
	ϕ_{cc}	=	0.787			
Factored limit state stress	ϕF_L	=	86.60	MPa		
2. Sections not subject to torsional or torsional-flexural buckling						... 3.4.8.2



Civil & Structural Engineering Design Services Pty. Ltd.

Largest slenderness ratio for flexural buckling	kL/r	=	79.25		
3.4.10 Uniform compression in components of columns, gross section - flat plates					
<i>1. Uniform compression in components of columns, gross section - flat plates with both edges supported</i>					
	k_1	=	0.35		
Max. distance between toes of fillets of supporting elements for plate	b'	=	114		
	t	=	3	mm	
Slenderness	b/t	=	38		
Limit 1	S_1	=	12.34		
Limit 2	S_2	=	32.87		
Factored limit state stress	ϕF_L	=	147.86	MPa	
Most adverse compressive limit state stress	F_a	=	86.60	MPa	
Most adverse tensile limit state stress	F_a	=	222.70	MPa	
Most adverse compressive & Tensile capacity factor	f_a/F_a	=	0.03		PASS
BENDING - IN-PLANE					
3.4.15 Compression in beams, extreme fibre, gross section rectangular tubes, box sections					
Unbraced length for bending	L_b	=	3000	mm	
Second moment of area (weak axis)	I_y	=	3821472	mm ⁴	
Torsion modulus	J	=	6722854.6	mm ³	
Elastic section modulus	Z	=	71775.36	mm ³	
Slenderness	S	=	84.96		
Limit 1	S_1	=	0.39		
Limit 2	S_2	=	1695.86		
Factored limit state stress	ϕF_L	=	209.24	MPa	

3.4.10.1
T3.3(D)

3.4.15(2)



Civil & Structural Engineering Design Services Pty. Ltd.

3.4.17 Compression in components of beams (component under uniform compression), gross section - flat plates with both edges supported					
	k_1	=	0.5		T3.3(D)
	k_2	=	2.04		T3.3(D)
Max. distance between toes of fillets of supporting elements for plate	b'	=	114 mm		
	t	=	3 mm		
Slenderness	b/t	=	38		
Limit 1	S_1	=	12.34		
Limit 2	S_2	=	46.95		
Factored limit state stress	ϕF_L	=	156.92 MPa		
Most adverse in-plane bending limit state stress	F_{bx}	=	156.92 MPa		
Most adverse in-plane bending capacity factor	f_{bx}/F_{bx}	=	0.16	PASS	
BENDING - OUT-OF-PLANE					
<i>NOTE: Limit state stresses, ϕF_L are the same for out-of-plane bending (doubly symmetric section)</i>					
Factored limit state stress	ϕF_L	=	156.92 MPa		
Most adverse out-of-plane bending limit state stress	F_{by}	=	156.92 MPa		
Most adverse out-of-plane bending capacity factor	f_{by}/F_{by}	=	0.63	PASS	
COMBINED ACTIONS					
4.1.1 Combined compression and bending					...
	F_a	=	86.60 MPa		4.1.1(2)
	F_{ao}	=	147.86 MPa		... 3.4.8
	F_{bx}	=	156.92 MPa		... 3.4.10
	F_{by}	=	156.92 MPa		... 3.4.17
	f_a/F_a	=	0.034		... 3.4.17
Check:	$f_a/F_a + f_{bx}/F_{bx} + f_{by}/F_{by} \leq 1.0$... 4.1.1 (3)
i.e.	0.82	\leq	1.0	PASS	



Civil & Structural Engineering Design Services Pty. Ltd.

SHEAR						
3.4.24 Shear in webs (Major Axis)						4.1.1(2)
Clear web height	h	=	144	mm		
	t	=	3	mm		
Slenderness	h/t	=	48			
Limit 1	S_1	=	29.01			
Limit 2	S_2	=	59.31			
Factored limit state stress	ϕF_L	=	111.87	MPa		
Stress From Shear force	f_{sx}	=	V/A_w			
			2.12	MPa		
3.4.25 Shear in webs (Minor Axis)						
Clear web height	b	=	114	mm		
	t	=	3	mm		
Slenderness	b/t	=	38			
Factored limit state stress	ϕF_L	=	122.00	MPa		
Stress From Shear force	f_{sy}	=	V/A_w			
			0.00	MPa		

6.4 Gable Beam

NAME	SYMBOL	VALUE	UNIT	NOTES	REF
80x100x2.5	Gable Beam				
Alloy and temper	6061-T6				AS1664.1
Tension	F_{tu}	=	262	MPa	Ultimate
	F_{ty}	=	241	MPa	Yield
Compression	F_{cy}	=	241	MPa	
Shear	F_{su}	=	165	MPa	Ultimate
	F_{sy}	=	138	MPa	Yield
Bearing	F_{bu}	=	551	MPa	Ultimate
	F_{by}	=	386	MPa	Yield
Modulus of elasticity	E	=	70000	MPa	Compressive
	k_t	=	1.0		T3.4(B)



Civil & Structural Engineering Design Services Pty. Ltd.

	k_c	=	1.0		
FEM ANALYSIS RESULTS					
Axial force	P	=	7.577 kN	compression	
	P	=	0 kN	Tension	
In plane moment	M_x	=	4.857E-17 kNm		
Out of plane moment	M_y	=	0.1657 kNm		
DESIGN STRESSES					
Gross cross section area	A_g	=	875 mm ²		
In-plane elastic section modulus	Z_x	=	23170.57 mm ³		
Out-of-plane elastic section mod.	Z_y	=	26161.45 mm ³		
Stress from axial force	f_a	=	P/A_g		
		=	8.66 MPa	compression	
		=	0.00 MPa	Tension	
Stress from in-plane bending	f_{bx}	=	M_x/Z_x		
		=	0.00 MPa	compression	
Stress from out-of-plane bending	f_{by}	=	M_y/Z_y		
		=	6.33 MPa	compression	
Tension					
3.4.3 Tension in rectangular tubes					
	ϕF_L	=	228.95 MPa		
		O R			
	ϕF_L	=	222.70 MPa		
COMPRESSION					
3.4.8 Compression in columns, axial, gross section					
1. General					
Unsupported length of member	L	=	5000 mm		
Effective length factor	k	=	1		
Radius of gyration about buckling axis (Y)	r_y	=	38.66 mm		
Radius of gyration about buckling axis (X)	r_x	=	32.55 mm		
Slenderness ratio	kLb/r_y	=	129.32		
Slenderness ratio	kL/r_x	=	153.63		
Slenderness parameter	λ	=	2.87		



Civil & Structural Engineering Design Services Pty. Ltd.

	D_c^*	=	90.3		
	S_1^*	=	0.33		
	S_2^*	=	1.23		
	ϕ_{cc}	=	0.950		
Factored limit state stress	ϕF_L	=	27.81	MPa	
<i>2. Sections not subject to torsional or torsional-flexural buckling</i>					... 3.4.8.2
Largest slenderness ratio for flexural buckling	kL/r	=	153.63		
3.4.10 Uniform compression in components of columns, gross section - flat plates					
<i>1. Uniform compression in components of columns, gross section - flat plates with both edges supported</i>					... 3.4.10.1
	k_1	=	0.35		T3.3(D)
Max. distance between toes of fillets of supporting elements for plate	b'	=	95		
	t	=	2.5	mm	
Slenderness	b/t	=	38		
Limit 1	S_1	=	12.34		
Limit 2	S_2	=	32.87		
Factored limit state stress	ϕF_L	=	147.86	MPa	
Most adverse compressive limit state stress	F_a	=	27.81	MPa	
Most adverse tensile limit state stress	F_a	=	222.70	MPa	
Most adverse compressive & Tensile capacity factor	f_a/F_a	=	0.31		PASS
BENDING - IN-PLANE					
3.4.15 Compression in beams, extreme fibre, gross section rectangular tubes, box sections					
Unbraced length for bending	L_b	=	5000	mm	
Second moment of area (weak axis)	I_y	=	1308072.9	mm ⁴	
Torsion modulus	J	=	1631340.4	mm ³	
Elastic section modulus	Z	=	23170.573	mm ³	



Civil & Structural Engineering Design Services Pty. Ltd.

Slenderness	S	=	158.62		
Limit 1	S ₁	=	0.39		
Limit 2	S ₂	=	1695.86		
Factored limit state stress	ϕF_L	=	201.50	MPa	3.4.15(2)
3.4.17 Compression in components of beams (component under uniform compression), gross section - flat plates with both edges supported					
	k ₁	=	0.5		T3.3(D)
	k ₂	=	2.04		T3.3(D)
Max. distance between toes of fillets of supporting elements for plate	b'	=	95	mm	
	t	=	2.5	mm	
Slenderness	b/t	=	38		
Limit 1	S ₁	=	12.34		
Limit 2	S ₂	=	46.95		
Factored limit state stress	ϕF_L	=	156.92	MPa	
Most adverse in-plane bending limit state stress	F _{bx}	=	156.92	MPa	
Most adverse in-plane bending capacity factor	f _{bx} /F _{bx}	=	0.00		PASS
BENDING - OUT-OF-PLANE					
<i>NOTE: Limit state stresses, ϕF_L are the same for out-of-plane bending (doubly symmetric section)</i>					
Factored limit state stress	ϕF_L	=	156.92	MPa	
Most adverse out-of-plane bending limit state stress	F _{by}	=	156.92	MPa	
Most adverse out-of-plane bending capacity factor	f _{by} /F _{by}	=	0.04		PASS
COMBINED ACTIONS					
4.1.1 Combined compression and bending					
	F _a	=	27.81	MPa	... 3.4.8
	F _{ao}	=	147.86	MPa	... 3.4.10



Civil & Structural Engineering Design Services Pty. Ltd.

	F_{bx}	=	156.92	MPa		... 3.4.17
	F_{by}	=	156.92	MPa		... 3.4.17
	f_a/F_a	=	0.311			
Check:	$f_a/F_a + f_{bx}/F_{bx} + f_{by}/F_{by} \leq 1.0$... 4.1.1 (3)
i.e.	0.35	\leq	1.0		PASS	
SHEAR						
3.4.24 Shear in webs (Major Axis)						...
						4.1.1(2)
Clear web height	h	=	75	mm		
	t	=	2.5	mm		
Slenderness	h/t	=	30			
Limit 1	S_1	=	29.01			
Limit 2	S_2	=	59.31			
Factored limit state stress	ϕF_L	=	130.09	MPa		
Stress From Shear force	f_{sx}	=	V/A_w			
			3.83	MPa		
3.4.25 Shear in webs (Minor Axis)						
Clear web height	b	=	95	mm		
	t	=	2.5	mm		
Slenderness	b/t	=	38			
Factored limit state stress	ϕF_L	=	122.00	MPa		
Stress From Shear force	f_{sy}	=	V/A_w			
			0.00	MPa		

6.5 Ridge & Eave Purlin

NAME	SYMBOL	VALUE	UNIT	NOTES	REF
80x100x2.5	Gable Beam				
Alloy and temper	6061-T6				AS1664.1
Tension	F_{tu}	=	262	MPa	Ultimate
	F_{ty}	=	241	MPa	Yield
Compression	F_{cy}	=	241	MPa	
Shear	F_{su}	=	165	MPa	Ultimate



Civil & Structural Engineering Design Services Pty. Ltd.

Bearing	F_{sy}	=	138	MPa	Yield	T3.4(B)
	F_{bu}	=	551	MPa	Ultimate	
	F_{by}	=	386	MPa	Yield	
Modulus of elasticity	E	=	70000	MPa	Compressive	
	k_t	=	1.0			
	k_c	=	1.0			
FEM ANALYSIS RESULTS						
Axial force	P	=	7.577	kN	compression	
	P	=	0	kN	Tension	
In plane moment	M_x	=	4.857E-17	kNm		
Out of plane moment	M_y	=	0.1657	kNm		
DESIGN STRESSES						
Gross cross section area	A_g	=	875	mm ²	compression Tension compression Tension compression Tension compression	
In-plane elastic section modulus	Z_x	=	23170.57 3	mm ³		
Out-of-plane elastic section mod.	Z_y	=	26161.45 8	mm ³		
Stress from axial force	f_a	=	P/ A_g			
		=	8.66	MPa		
		=	0.00	MPa		
Stress from in-plane bending	f_{bx}	=	M_x/Z_x			
		=	0.00	MPa		
Stress from out-of-plane bending	f_{by}	=	M_y/Z_y			
		=	6.33	MPa		
Tension						
3.4.3 Tension in rectangular tubes						
	ϕF_L	=	228.95	MPa		
		O R				
	ϕF_L	=	222.70	MPa		
COMPRESSION						
3.4.8 Compression in columns, axial, gross section						
1. General						... 3.4.8.1
Unsupported length of member	L	=	5000	mm		
Effective length factor	k	=	1			



Civil & Structural Engineering Design Services Pty. Ltd.

Radius of gyration about buckling axis (Y)	r_y	=	38.66	mm		
Radius of gyration about buckling axis (X)	r_x	=	32.55	mm		
Slenderness ratio	kLb/ry	=	129.32			
Slenderness ratio	kL/rx	=	153.63			
Slenderness parameter	λ	=	2.87			
	D_c^*	=	90.3			
	S_1^*	=	0.33			
	S_2^*	=	1.23			
	ϕ_{cc}	=	0.950			
Factored limit state stress	ϕF_L	=	27.81	MPa		
2. Sections not subject to torsional or torsional-flexural buckling						... 3.4.8.2
Largest slenderness ratio for flexural buckling	kL/r	=	153.63			
3.4.10 Uniform compression in components of columns, gross section - flat plates						
1. Uniform compression in components of columns, gross section - flat plates with both edges supported						... 3.4.10.1
	k_1	=	0.35			T3.3(D)
Max. distance between toes of fillets of supporting elements for plate	b'	=	95			
	t	=	2.5	mm		
Slenderness	b/t	=	38			
Limit 1	S_1	=	12.34			
Limit 2	S_2	=	32.87			
Factored limit state stress	ϕF_L	=	147.86	MPa		
Most adverse compressive limit state stress	F_a	=	27.81	MPa		
Most adverse tensile limit state stress	F_a	=	222.70	MPa		
Most adverse compressive & Tensile capacity factor	f_a/F_a	=	0.31		PASS	
BENDING - IN-PLANE						
3.4.15 Compression in beams, extreme fibre, gross section rectangular tubes, box sections						



Civil & Structural Engineering Design Services Pty. Ltd.

Unbraced length for bending	L_b	=	5000	mm		
Second moment of area (weak axis)	I_y	=	1308072.9	mm ⁴		
Torsion modulus	J	=	1631340.4	mm ³		
Elastic section modulus	Z	=	23170.573	mm ³		
Slenderness	S	=	158.62			
Limit 1	S_1	=	0.39			
Limit 2	S_2	=	1695.86			
Factored limit state stress	ϕF_L	=	201.50	MPa		3.4.15(2)
3.4.17 Compression in components of beams (component under uniform compression), gross section - flat plates with both edges supported						
	k_1	=	0.5			T3.3(D)
	k_2	=	2.04			T3.3(D)
Max. distance between toes of fillets of supporting elements for plate	b'	=	95	mm		
	t	=	2.5	mm		
Slenderness	b/t	=	38			
Limit 1	S_1	=	12.34			
Limit 2	S_2	=	46.95			
Factored limit state stress	ϕF_L	=	156.92	MPa		
Most adverse in-plane bending limit state stress	F_{bx}	=	156.92	MPa		
Most adverse in-plane bending capacity factor	f_{bx}/F_{bx}	=	0.00		PASS	
BENDING - OUT-OF-PLANE						
<i>NOTE: Limit state stresses, ϕF_L are the same for out-of-plane bending (doubly symmetric section)</i>						
Factored limit state stress	ϕF_L	=	156.92	MPa		
Most adverse out-of-plane bending limit state stress	F_{by}	=	156.92	MPa		



Civil & Structural Engineering Design Services Pty. Ltd.

Most adverse out-of-plane bending capacity factor	f_{by}/F_{by}	=	0.04	PASS	
COMBINED ACTIONS					
4.1.1 Combined compression and bending					4.1.1(2)
	F_a	=	27.81 MPa		... 3.4.8
	F_{ao}	=	147.86 MPa		... 3.4.10
	F_{bx}	=	156.92 MPa		... 3.4.17
	F_{by}	=	156.92 MPa		... 3.4.17
	f_a/F_a	=	0.311		
Check: $f_a/F_a + f_{bx}/F_{bx} + f_{by}/F_{by} \leq 1.0$... 4.1.1 (3)
i.e.	0.35	≤	1.0	PASS	
SHEAR					
3.4.24 Shear in webs (Major Axis)					4.1.1(2)
Clear web height	h	=	75 mm		
	t	=	2.5 mm		
Slenderness	h/t	=	30		
Limit 1	S_1	=	29.01		
Limit 2	S_2	=	59.31		
Factored limit state stress	ϕF_L	=	130.09 MPa		
Stress From Shear force	f_{sx}	=	V/A_w		
			3.83 MPa		
3.4.25 Shear in webs (Minor Axis)					
Clear web height	b	=	95 mm		
	t	=	2.5 mm		
Slenderness	b/t	=	38		
Factored limit state stress	ϕF_L	=	122.00 MPa		
Stress From Shear force	f_{sy}	=	V/A_w		
			0.00 MPa		

6.6 Gable Beam

NAME	SYMBOL	VALUE	UNIT	NOTES	REF
------	--------	-------	------	-------	-----



Civil & Structural Engineering Design Services Pty. Ltd.

80x100x2.5	Eave & Ridge Beam					
Alloy and temper	6061-T6					AS1664.1
Tension	F_{tu}	=	262	MPa	Ultimate	T3.3(A)
	F_{ty}	=	241	MPa	Yield	
Compression	F_{cy}	=	241	MPa		
	F_{su}	=	165	MPa	Ultimate	
Shear	F_{sy}	=	138	MPa	Yield	
	F_{bu}	=	551	MPa	Ultimate	
Bearing	F_{by}	=	386	MPa	Yield	
Modulus of elasticity	E	=	70000	MPa	Compressive	T3.4(B)
	k_t	=	1.0			
	k_c	=	1.0			
FEM ANALYSIS RESULTS						
Axial force	P	=	3.688	kN	compression	
	P	=	0	kN	Tension	
In plane moment	M_x	=	5.008E-16	kNm		
Out of plane moment	M_y	=	1.0502	kNm		
DESIGN STRESSES						
Gross cross section area	A_g	=	875	mm ²		
In-plane elastic section modulus	Z_x	=	23170.573	mm ³		
Out-of-plane elastic section mod.	Z_y	=	26161.458	mm ³		
Stress from axial force	f_a	=	P/A_g			
		=	4.21	MPa	compression	
		=	0.00	MPa	Tension	
Stress from in-plane bending	f_{bx}	=	M_x/Z_x			
		=	0.00	MPa	compression	
Stress from out-of-plane bending	f_{by}	=	M_y/Z_y			
		=	40.14	MPa	compression	
Tension						
3.4.3 Tension in rectangular tubes						
	ϕF_L	=	228.95	MPa		
		O R				



Civil & Structural Engineering Design Services Pty. Ltd.

		ϕF_L	=	222.70	MPa		
COMPRESSION							
3.4.8 Compression in columns, axial, gross section							
1. General							3.4.8.1
Unsupported length of member	L	=	5000	mm			
Effective length factor	k	=	1				
Radius of gyration about buckling axis (Y)	r_y	=	38.66	mm			
Radius of gyration about buckling axis (X)	r_x	=	32.55	mm			
Slenderness ratio	kLb/r_y	=	129.32				
Slenderness ratio	kL/r_x	=	153.63				
Slenderness parameter	λ	=	2.87				
	D_c^*	=	90.3				
	S_1^*	=	0.33				
	S_2^*	=	1.23				
	ϕ_{cc}	=	0.950				
Factored limit state stress	ϕF_L	=	27.81	MPa			
2. Sections not subject to torsional or torsional-flexural buckling							3.4.8.2
Largest slenderness ratio for flexural buckling	kL/r	=	153.63				
3.4.10 Uniform compression in components of columns, gross section - flat plates							
1. Uniform compression in components of columns, gross section - flat plates with both edges supported							3.4.10.1
	k_1	=	0.35				T3.3(D)
Max. distance between toes of fillets of supporting elements for plate	b'	=	95				
	t	=	2.5	mm			
Slenderness	b/t	=	38				
Limit 1	S_1	=	12.34				
Limit 2	S_2	=	32.87				
Factored limit state stress	ϕF_L	=	147.86	MPa			



Civil & Structural Engineering Design Services Pty. Ltd.

Most adverse compressive limit state stress	F_a	=	27.81	MPa		
Most adverse tensile limit state stress	F_a	=	222.70	MPa		
Most adverse compressive & Tensile capacity factor	f_a/F_a	=	0.15		PASS	
BENDING - IN-PLANE						
3.4.15 <i>Compression in beams, extreme fibre, gross section rectangular tubes, box sections</i>						
Unbraced length for bending	L_b	=	5000	mm		
Second moment of area (weak axis)	I_y	=	1308072.9	mm ⁴		
Torsion modulus	J	=	1631340.4	mm ³		
Elastic section modulus	Z	=	23170.573	mm ³		
Slenderness	S	=	158.62			
Limit 1	S_1	=	0.39			
Limit 2	S_2	=	1695.86			
Factored limit state stress	ϕF_L	=	201.50	MPa		3.4.15(2)
3.4.17 <i>Compression in components of beams (component under uniform compression), gross section - flat plates with both edges supported</i>						
	k_1	=	0.5			T3.3(D)
	k_2	=	2.04			T3.3(D)
Max. distance between toes of fillets of supporting elements for plate	b'	=	95	mm		
	t	=	2.5	mm		
Slenderness	b/t	=	38			
Limit 1	S_1	=	12.34			
Limit 2	S_2	=	46.95			
Factored limit state stress	ϕF_L	=	156.92	MPa		
Most adverse in-plane bending limit state stress	F_{bx}	=	156.92	MPa		
Most adverse in-plane bending capacity factor	f_{bx}/F_{bx}	=	0.00		PASS	



Civil & Structural Engineering Design Services Pty. Ltd.

BENDING - OUT-OF-PLANE					
NOTE: Limit state stresses, ϕF_L are the same for out-of-plane bending (doubly symmetric section)					
Factored limit state stress	ϕF_L	=	156.92 MPa		
Most adverse out-of-plane bending limit state stress	F_{by}	=	156.92 MPa		
Most adverse out-of-plane bending capacity factor	f_{by}/F_{by}	=	0.26	PASS	
COMBINED ACTIONS					
4.1.1 Combined compression and bending					...
	F_a	=	27.81 MPa		4.1.1(2)
	F_{ao}	=	147.86 MPa	... 3.4.8	
	F_{bx}	=	156.92 MPa	... 3.4.10	
	F_{by}	=	156.92 MPa	... 3.4.17	
	f_a/F_a	=	0.152	... 3.4.17	
Check: $f_a/F_a + f_{bx}/F_{bx} + f_{by}/F_{by} \leq 1.0$... 4.1.1 (3)
i.e.	0.41	≤	1.0	PASS	
SHEAR					
3.4.24 Shear in webs (Major Axis)					...
Clear web height	h	=	75 mm		4.1.1(2)
	t	=	2.5 mm		
Slenderness	h/t	=	30		
Limit 1	S_1	=	29.01		
Limit 2	S_2	=	59.31		
Factored limit state stress	ϕF_L	=	130.09 MPa		
Stress From Shear force	f_{sx}	=	V/A_w		
			3.83 MPa		
3.4.25 Shear in webs (Minor Axis)					
Clear web height	b	=	95 mm		
	t	=	2.5 mm		



Civil & Structural Engineering Design Services Pty. Ltd.

Slenderness	b/t	=	38		
Factored limit state stress	ϕF_L	=	122.00	MPa	
Stress From Shear force	f_{sy}	=	V/A _w		
			0.00	MPa	

6.7 Intermediate Purlin

NAME	SYMBOL	VALUE	UNIT	NOTES	REF
60x60x2.5	Purlin				
Alloy and temper	6061-T6				AS1664.1
Tension	F_{tu}	=	262	MPa	Ultimate
	F_{ty}	=	241	MPa	Yield
Compression	F_{cy}	=	241	MPa	
Shear	F_{su}	=	165	MPa	Ultimate
	F_{sy}	=	138	MPa	Yield
Bearing	F_{bu}	=	551	MPa	Ultimate
	F_{by}	=	386	MPa	Yield
Modulus of elasticity	E	=	70000	MPa	Compressive
	k_t	=	1.0		
	k_c	=	1.0		
FEM ANALYSIS RESULTS					
Axial force	P	=	1.517	kN	compression
	P	=	0	kN	Tension
In plane moment	M_x	=	1.207	kNm	
Out of plane moment	M_y	=	0.1539	kNm	
DESIGN STRESSES					
Gross cross section area	A_g	=	575	mm ²	
In-plane elastic section modulus	Z_x	=	10581.597	mm ³	
Out-of-plane elastic section mod.	Z_y	=	10581.597	mm ³	
Stress from axial force	f_a	=	P/A _g		
		=	2.64	MPa	compression
		=	0.00	MPa	Tension
Stress from in-plane bending	f_{bx}	=	M_x/Z_x		



Civil & Structural Engineering Design Services Pty. Ltd.

Stress from out-of-plane bending	f_{by}	=	114.07 MPa	compression	
		=	M_y/Z_y		
		=	14.54 MPa	compression	
Tension					
3.4.3 Tension in rectangular tubes					
	ϕF_L	=	228.95 MPa		
		O			
		R			
	ϕF_L	=	222.70 MPa		
COMPRESSION					
3.4.8 Compression in columns, axial, gross section					
1. General					
Unsupported length of member	L	=	5000 mm		3.4.8.1
Effective length factor	k	=	1		
Radius of gyration about buckling axis (Y)	r_y	=	23.50 mm		
Radius of gyration about buckling axis (X)	r_x	=	23.50 mm		
Slenderness ratio	kLb/r_y	=	212.80		
Slenderness ratio	kL/r_x	=	212.80		
Slenderness parameter	λ	=	3.97		
	D_c^*	=	90.3		
	S_1^*	=	0.33		
	S_2^*	=	1.23		
	ϕ_{cc}	=	0.950		
Factored limit state stress	ϕF_L	=	14.49 MPa		
2. Sections not subject to torsional or torsional-flexural buckling					
Largest slenderness ratio for flexural buckling	kL/r	=	212.80		3.4.8.2
3.4.10 Uniform compression in components of columns, gross section - flat plates					
1. Uniform compression in components of columns, gross section - flat plates with both edges supported					
	k_1	=	0.35		3.4.10.1
					T3.3(D)



Civil & Structural Engineering Design Services Pty. Ltd.

Max. distance between toes of fillets of supporting elements for plate	b'	=	55		
	t	=	2.5	mm	
Slenderness	b/t	=	22		
Limit 1	S_1	=	12.34		
Limit 2	S_2	=	32.87		
Factored limit state stress	ϕF_L	=	201.84	MPa	
Most adverse compressive limit state stress	F_a	=	14.49	MPa	
Most adverse tensile limit state stress	F_a	=	222.70	MPa	
Most adverse compressive & Tensile capacity factor	f_a/F_a	=	0.18		PASS
BENDING - IN-PLANE					
3.4.15 Compression in beams, extreme fibre, gross section rectangular tubes, box sections					
Unbraced length for bending	L_b	=	5000	mm	
Second moment of area (weak axis)	I_y	=	317447.9 2	mm ⁴	
Torsion modulus	J	=	475273.4 4	mm ³	
Elastic section modulus	Z	=	10581.59 7	mm ³	
Slenderness	S	=	272.42		
Limit 1	S_1	=	0.39		
Limit 2	S_2	=	1695.86		
Factored limit state stress	ϕF_L	=	192.53	MPa	3.4.15(2)
3.4.17 Compression in components of beams (component under uniform compression), gross section - flat plates with both edges supported					
	k_1	=	0.5		T3.3(D)
	k_2	=	2.04		T3.3(D)
Max. distance between toes of fillets of supporting elements for plate	b'	=	55	mm	
	t	=	2.5	mm	
Slenderness	b/t	=	22		



Civil & Structural Engineering Design Services Pty. Ltd.

Limit 1	S_1	=	12.34		
Limit 2	S_2	=	46.95		
Factored limit state stress	ϕF_L	=	201.84	MPa	
Most adverse in-plane bending limit state stress	F_{bx}	=	192.53	MPa	
Most adverse in-plane bending capacity factor	f_{bx}/F_{bx}	=	0.59		PASS
BENDING - OUT-OF-PLANE					
<i>NOTE: Limit state stresses, ϕF_L are the same for out-of-plane bending (doubly symmetric section)</i>					
Factored limit state stress	ϕF_L	=	192.53	MPa	
Most adverse out-of-plane bending limit state stress	F_{by}	=	192.53	MPa	
Most adverse out-of-plane bending capacity factor	f_{by}/F_{by}	=	0.08		PASS
COMBINED ACTIONS					
4.1.1 Combined compression and bending					
	F_a	=	14.49	MPa	... 4.1.1(2)
	F_{ao}	=	201.84	MPa	... 3.4.8
	F_{bx}	=	192.53	MPa	... 3.4.10
	F_{by}	=	192.53	MPa	... 3.4.17
	f_a/F_a	=	0.182		... 3.4.17
Check:	$f_a/F_a + f_{bx}/F_{bx} + f_{by}/F_{by} \leq 1.0$... 4.1.1(3)
i.e.	0.85	≤	1.0		PASS
SHEAR					
3.4.24 Shear in webs (Major Axis)					
Clear web height	h	=	55	mm	... 4.1.1(2)
	t	=	2.5	mm	
Slenderness	h/t	=	22		
Limit 1	S_1	=	29.01		
Limit 2	S_2	=	59.31		



Civil & Structural Engineering Design Services Pty. Ltd.

Factored limit state stress	ϕF_L	=	131.10	MPa		
Stress From Shear force	f_{sx}	=	V/A_w			
			5.83	MPa		
3.4.25 Shear in webs (Minor Axis)						
Clear web height	b	=	55	mm		
	t	=	2.5	mm		
Slenderness	b/t	=	22			
Factored limit state stress	ϕF_L	=	131.10	MPa		
Stress From Shear force	f_{sy}	=	V/A_w			
			0.00	MPa		

6.8 Brace

NAME	SYMBOL		VALUE	UNIT	NOTES	REF
60x60x2.5	Brace					
Alloy and temper	6061-T6					AS1664.1
Tension	F _{tu}	=	262	MPa	Ultimate	T3.3(A)
	F _{ty}	=	241	MPa	Yield	
Compression	F _{cy}	=	241	MPa		
Shear	F _{su}	=	165	MPa	Ultimate	
	F _{sy}	=	138	MPa	Yield	
Bearing	F _{bu}	=	551	MPa	Ultimate	
	F _{by}	=	386	MPa	Yield	
Modulus of elasticity	E	=	70000	MPa	Compressive	
	k _t	=	1.0			T3.4(B)
	k _c	=	1.0			
FEM ANALYSIS RESULTS						
Axial force	P	=	0.658	kN	compression	
	P	=	0	kN	Tension	
In plane moment	M _x	=	1.1126	kNm		
Out of plane moment	M _y	=	2.9488	kNm		
DESIGN STRESSES						



Civil & Structural Engineering Design Services Pty. Ltd.

Gross cross section area	A_g	=	924	mm ²		
In-plane elastic section modulus	Z_x	=	22861.3	mm ³		
Out-of-plane elastic section mod.	Z_y	=	22861.3	mm ³		
Stress from axial force	f_a	=	P/A_g			
		=	0.71	MPa	compression	
		=	0.00	MPa	Tension	
Stress from in-plane bending	f_{bx}	=	M_x/Z_x			
		=	48.67	MPa	compression	
Stress from out-of-plane bending	f_{by}	=	M_y/Z_y			
		=	128.99	MPa	compression	
Tension						
3.4.3 Tension in rectangular tubes						
	ϕF_L	=	228.95	MPa		
		O				
		R				
	ϕF_L	=	222.70	MPa		
COMPRESSION						
3.4.8 Compression in columns, axial, gross section						
1. General						3.4.8.1
Unsupported length of member	L	=	5830	mm		
Effective length factor	k	=	1			
Radius of gyration about buckling axis (Y)	r_y	=	31.46	mm		
Radius of gyration about buckling axis (X)	r_x	=	31.46	mm		
Slenderness ratio	kLb/r_y	=	185.32			
Slenderness ratio	kL/r_x	=	185.32			
Slenderness parameter	λ	=	3.46			
	D_c^*	=	90.3			
	S_1^*	=	0.33			
	S_2^*	=	1.23			
	ϕ_{cc}	=	0.950			
Factored limit state stress	ϕF_L	=	19.11	MPa		
2. Sections not subject to torsional or torsional-flexural buckling						3.4.8.2



Civil & Structural Engineering Design Services Pty. Ltd.

Largest slenderness ratio for flexural buckling	kL/r	=	185.32		
3.4.10 Uniform compression in components of columns, gross section - flat plates					
<i>1. Uniform compression in components of columns, gross section - flat plates with both edges supported</i>					
	k_1	=	0.35		3.4.10.1
Max. distance between toes of fillets of supporting elements for plate	b'	=	74		T3.3(D)
	t	=	3	mm	
Slenderness	b/t	=	24.666667		
Limit 1	S_1	=	12.34		
Limit 2	S_2	=	32.87		
Factored limit state stress	ϕF_L	=	194.35	MPa	
Most adverse compressive limit state stress	F_a	=	19.11	MPa	
Most adverse tensile limit state stress	F_a	=	222.70	MPa	
Most adverse compressive & Tensile capacity factor	f_a/F_a	=	0.04		PASS
BENDING - IN-PLANE					
3.4.15 Compression in beams, extreme fibre, gross section rectangular tubes, box sections					
Unbraced length for bending	L_b	=	5830	mm	
Second moment of area (weak axis)	I_y	=	914452	mm ⁴	
Torsion modulus	J	=	1369599	mm ³	
Elastic section modulus	Z	=	22861.3	mm ³	
Slenderness	S	=	238.19		
Limit 1	S_1	=	0.39		
Limit 2	S_2	=	1695.86		
Factored limit state stress	ϕF_L	=	194.99	MPa	3.4.15(2)



Civil & Structural Engineering Design Services Pty. Ltd.

3.4.17 Compression in components of beams (component under uniform compression), gross section - flat plates with both edges supported					
	k_1	=	0.5		T3.3(D)
	k_2	=	2.04		T3.3(D)
Max. distance between toes of fillets of supporting elements for plate	b'	=	74 mm		
	t	=	3 mm		
Slenderness	b/t	=	24.666667		
Limit 1	S_1	=	12.34		
Limit 2	S_2	=	46.95		
Factored limit state stress	ϕF_L	=	194.35 MPa		
Most adverse in-plane bending limit state stress	F_{bx}	=	194.35 MPa		
Most adverse in-plane bending capacity factor	f_{bx}/F_{bx}	=	0.25	PASS	
BENDING - OUT-OF-PLANE					
<i>NOTE: Limit state stresses, ϕF_L are the same for out-of-plane bending (doubly symmetric section)</i>					
Factored limit state stress	ϕF_L	=	194.35 MPa		
Most adverse out-of-plane bending limit state stress	F_{by}	=	194.35 MPa		
Most adverse out-of-plane bending capacity factor	f_{by}/F_{by}	=	0.66	PASS	
COMBINED ACTIONS					
4.1.1 Combined compression and bending					...
	F_a	=	19.11 MPa		4.1.1(2)
	F_{ao}	=	194.35 MPa		... 3.4.8
	F_{bx}	=	194.35 MPa		... 3.4.10
	F_{by}	=	194.35 MPa		... 3.4.17
	f_a/F_a	=	0.037		... 3.4.17
Check:	$f_a/F_a + f_{bx}/F_{bx} + f_{by}/F_{by} \leq 1.0$... 4.1.1 (3)



Civil & Structural Engineering Design Services Pty. Ltd.

i.e. 0.95 ≤ 1.0				PASS	
SHEAR					
3.4.24 Shear in webs (Major Axis)					...
					4.1.1(2)
Clear web height	h	=	74	mm	
	t	=	3	mm	
Slenderness	h/t	=	24.66666		
			7		
Limit 1	S ₁	=	29.01		
Limit 2	S ₂	=	59.31		
Factored limit state stress	φF _L	=	131.10	MPa	
Stress From Shear force	f _{sx}	=	V/A _w		
			3.63	MPa	
3.4.25 Shear in webs (Minor Axis)					
Clear web height	b	=	74	mm	
	t	=	3	mm	
Slenderness	b/t	=	24.66666		
			7		
Factored limit state stress	φF _L	=	131.10	MPa	
Stress From Shear force	f _{sy}	=	V/A _w		
			0.00	MPa	



Civil & Structural Engineering Design Services Pty. Ltd.

7 Summary

7.1 Conclusions

- a. The 15m x 20m Event Deluxe 2 Tent structure as specified has been analyzed with a conclusion that it has the capacity to withstand wind speeds up to and including **80km/hr**.
- b. For forecast winds in excess of **80km/hr** – all fabric shall be removed from the frames, and the structure should be completely dismantled.
- c. Wall Bracing as well as roof cable bracing are required at each end bay and every third bay in between to resist against lateral movement due to wind direction2. (refer to detail drawings).
- d. For uplift due to 80km/hr, 7 kN (0.7T) holding down weight/per leg for upright support section is required.
- e. For uplift due to 80km/hr, 5 kN (0.5T) hold down weight/ per leg of gable section is required.
- f. The bearing pressure of soil should be clarified and checked by an engineer prior to any construction for considering foundation and base plate.
- g. Roof Bracing Cables are required to have the minimum tensile strength equal to 10kN SWL.
- h. It is important to use 60x60x2.5 profile for all intermediate purlins with spacing not exceeding 2000mm. This means 6 intermediate purlins are required per bay for the 15m tent structure.

Yours faithfully,

E.A. Bennett M.I.E. Aust. NPER 198230



Civil & Structural Engineering Design Services Pty. Ltd.

8 Appendix A – Base Anchorage Requirements

15m x 20m Event Deluxe 2 Tent Structure:

Tent Span	Sile Type	Required Weight Per Leg
15 m	A	700kg
	B	700kg
	C	700kg
	D	700kg
	E	700kg

Definition of Soil Types:

Type A : Loose sand such as dunal sand. Uncompacted site filling may also be included in this soil type.

Type B : Medium to stiff clays or silty clays

Type C: Moderately compact sand or gravel eg. of alluvial origin.

Type D : Compact sand and gravel eg. Weathered sandstone or compacted quarry rubble hardstand

Type E : Concrete slab on ground. Number of dyna bolts and slab thickness to be designed.



9 Appendix B – Hold Down Method Details

