



Civil & Structural Engineering Design Services Pty. Ltd.

Client: EXTREME MARQUEES PTY. LTD.

Project: Design check – 6m, 8m, 10m, 12m Event Standard Tents (5m Bay) for **80km/hr** Wind Speed.

Reference: Extreme Marquees Pty Ltd Technical Data

Report by: KZ
Checked by: EAB
Date: 18/11/2016

JOB NO: E-11-264962-2



Civil & Structural Engineering Design Services Pty. Ltd.

Table of Contents

1	Introduction	3
2	Design Restrictions and Limitations.....	4
3	Specifications.....	5
3.1	General.....	5
3.2	Aluminium Properties.....	6
3.3	Buckling Constants.....	6
3.4	Section Properties.....	7
4	Design Loads	7
4.1	Ultimate	7
4.2	Load Combinations.....	7
4.2.1	Serviceability	7
4.2.2	Ultimate.....	8
5	Wind Analysis	8
5.1	Parameters.....	8
5.2	Pressure Coefficients (C_{fig}).....	8
5.2.1	Pressure summary.....	16
5.3	Wind Load Diagrams.....	17
5.3.1	Wind 1(case 1)	17
5.3.2	Wind 1(case 2)	17
5.3.3	Wind 2(Case1)	18
5.3.4	Wind 2(case 2)	18
5.3.5	Max Bending Moment due to critical load combination in major axis.....	19
5.3.6	Max Bending Moment in minor axis due to critical load combination.....	19
5.3.7	Max Shear in due to critical load combination.....	20
5.3.8	Max Axial force in upright support and roof beam due to critical load combination.....	20
5.3.9	Max reactions.....	21
5.3.10	Summary Table:	21
6	Checking Members Based on ASI664.1 ALUMINIUM LSD	22
6.1	Rafter.....	22
6.2	Upright Supports	26
6.3	Gable Pole	30
6.4	Ridge & Eave Purlin.....	34
6.5	Gable Beam.....	38
6.6	Intermediate Purlin.....	42
6.7	Brace.....	46
7	Summary.....	51
7.1	Conclusions.....	51
8	Appendix A – Base Anchorage Requirements	52
9	Appendix B – Hold Down Method Details.....	53



Civil & Structural Engineering Design Services Pty. Ltd.

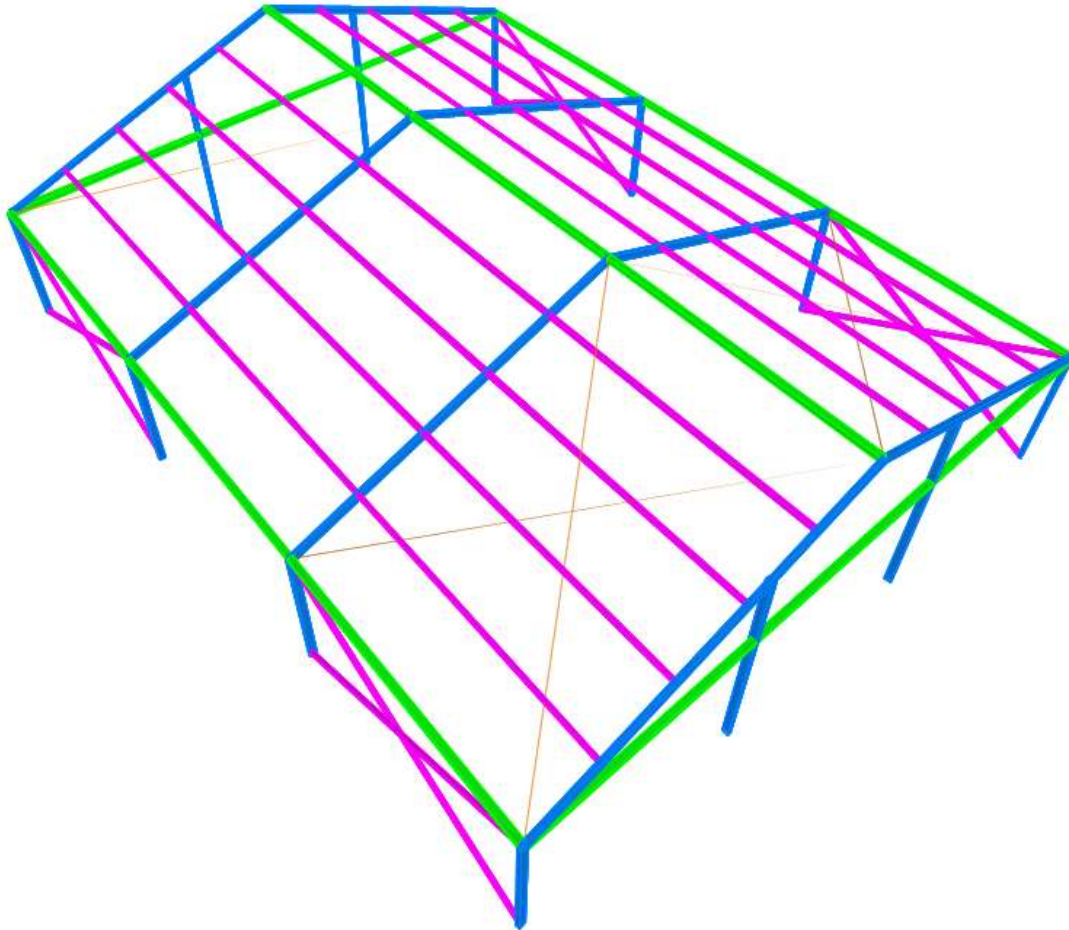
1 Introduction

This 'Certification' is the sole property for copyright to Mr. Ted Bennett of Civil & Structural Engineering Design Services Pty. Ltd.

The following structural drawings and calculations are for the transportable tents supplied by Extreme Marquees.

The frame consists principally of extruded '6061-T6' aluminium components with hot dipped galvanized steel ridge and knee connection inserts and base plate.

The report examines the effect of 3s gust wind of 80 km/hr on 12m × 15m Event Standard Tent as the worst-case scenario. The relevant Australian Standards AS1170.0:2002 General principles, AS1170.1:2002 Permanent, imposed and other actions and AS1170.2:2011 Wind actions are used. The design check is in accordance with AS/NZS 1664.1:1997 Aluminum limit state design.





2 Design Restrictions and Limitations

- 2.1 The erected structure is for temporary use only.
- 2.2 It should be noted that if high gust wind speeds are anticipated or forecast in the locality of the tent, the temporary erected structure should be dismantled.
- 2.3 For forecast winds in excess of (**refer to summary**) – all fabric shall be removed from the frames, and the structure should be completely dismantled.
(Please note that the locality squall or gust wind speed is affected by factors such as terrain exposure and site elevations.)
- 2.4 The structure may only be erected in regions with wind classifications no greater than the limits specified on the attached wind analysis.
- 2.5 The wind classifications are based upon Terrain Category 2. Considerations have also been made to the regional wind terrain category, topographical location and site shielding from adjacent structures. Please note that in many instances topographical factors such as a location on the crest of a hill or on top of an escarpment may yield a higher wind speed classification than that derived for a higher wind terrain category in a level topographical region. For this reason, particular regard shall be paid to the topographical location of the structure. For localities which do not conform to the standard prescribed descriptions for wind classes as defined above, a qualified Structural Engineer may be employed to determine an appropriate wind class for that the particular site.
- 2.6 The structures in no circumstances shall ever be erected in tropical or severe tropical cyclonic condition as defined on the Map of Australia in AS 1170.2-2011, Figure 3.1.
- 2.7 The tent structure has not been designed to withstand snow and ice loadings such as when erected in alpine regions.
- 2.8 For the projects, where the site conditions approach the design limits, extra consideration should be given to pullout tests of the stakes and professional assessment of the appropriate wind classification for the site.
- 2.9 The tents are stabilized as using roof/wall cross bracing at end bays and every third bay in between as shown on the drawings.
- 2.10 It is important to use 60x60x2 profile for all intermediate purlins with spacing not exceeding 1300mm. This means 8 intermediate purlins are required per bay for the 12m tent structure (as illustrated).
- 2.11 It is important to use 120x68x3 profile for all gable poles.




Civil & Structural Engineering Design Services Pty. Ltd.

3 Specifications

3.1 General

Tent category	
Material	Aluminum 6061-T6


Size	Model
12m x 12m	Event Standard



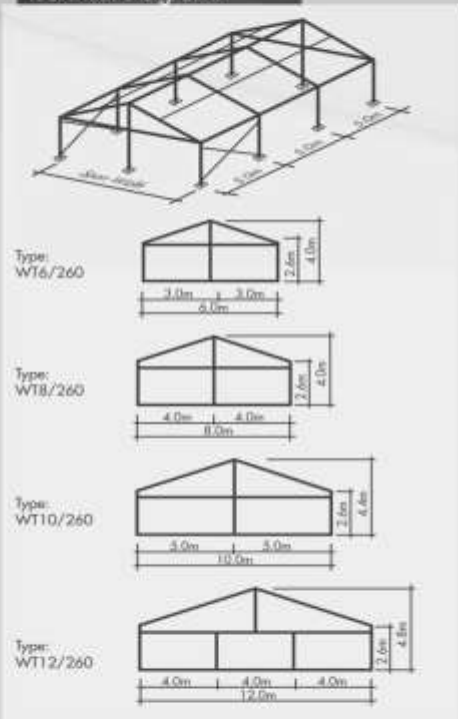
Event Standard

6m / 8m / 10m / 12m

Product Photos



Technical Diagrams



Item	Specification
Clear-Span Width	6m / 8m / 10m / 12m
Eave Height	2.6m
Ridge Height	3.7m / 4.0m / 4.4m / 4.8m
Roof Pitch	20°
Bay Distance	5m
Longest Component	3.7m / 4.2m / 5.4m / 6.4m
Minimum Tent Length	10m
Roof Fixing	Bar Tensioning
Main Profile	120 x 68 x 3mm (4-channel)
Max Allowed Windspeed	80km/hr 0.3kn/m ²
Eave Connection	Hot-dip galvanized steel insert
Framework Material	Hard pressed extruded aluminium 6061/T6 (13HW)
Cover Material	PVC-coated Polyester textile, flame retardant to DIN 4102 B1,M2. 750-900g/m ²

Product Info


The Event Standard is the start for our professional 5m bay event range. The Event Standard offers popular clear-span widths of 6m, 8m 10 and 12m with an eave height 2.6m. The Event Tent series are available with a complete range of accessories including sidewalls with clear windows, roof lining glass wall & door systems ABS solid walling system & flooring system.

Accessories:

- PVC window sidewalls
- Anchoring
- Rain gutter
- Lining & curtains
- Glass door units
- Hard walling system
- Glass walling system
- Transparent PVC cover & sidewall
- Flooring System
- Weight plate

Profiles

Framework Main profile dimensions and use



www.extrememarquees.com.au
call 1300 850 832



Civil & Structural Engineering Design Services Pty. Ltd.

3.2 Aluminium Properties

Aluminium Properties		
Compressive yield strength	Fcy	241 MPa
Tensile yeild strength	Fty	241 MPa
Tensile ultimate strength	Ftu	262 MPa
Shear yield strength	Fsy	138 MPa
Bearing yeild strength	Fby	386 MPa
Bearing ultimate strength	Fbu	552 MPa
Yield stress (min{Fcy:Fty})	Fy	241 MPa
Elastic modulus	E	70000 MPa
Shear modulus	G	26250 MPa
Value of coefficients	kt	1.00
	kc	1.00
Capacity factor (general yield)	ϕ_y	0.95
Capacity factor (ultimate)	ϕ_u	0.85
Capacity factor (bending)	ϕ_b	0.85
Capacity factor (elastic shear buckling)	ϕ_v	0.8
Capacity factor (inelastic shear buckling)	ϕ_{vp}	0.9

3.3 Buckling Constants

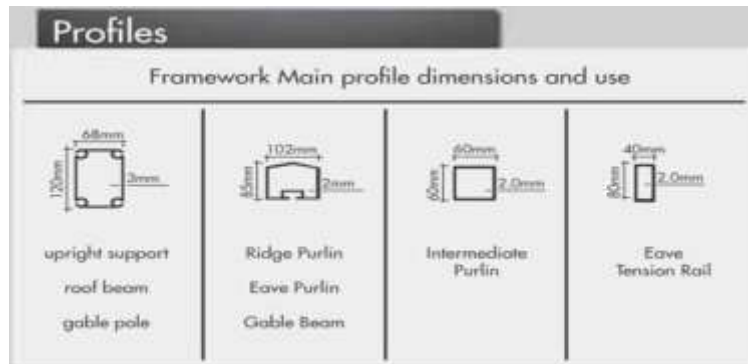
Type of member and stresses	Intercept, MPa	Slope, MPa	Intersection
Compression in columns and beam flanges	BC= 242.87	Dc= 1.43	Cc= 69.61
Compression in flat plates	Bp= 310.11	Dp= 2.06	Cp= 61.60
Compressive bending stress in solid rectangular bars	Bbr= 459.89	Dbr= 4.57	Cbr= 67.16
Compressive bending stress in round tubes	Btb= 250.32	Dtb= 14.18	Ctb= 183.52
Shear stress in flat plates	Bs= 178.29	Ds= 0.90	Cs= 81.24



Civil & Structural Engineering Design Services Pty. Ltd.

3.4 Section Properties

MEMBER(S)	Section	b	d	t	y _c	A _g	Z _x	Z _y	S _x	S _y	I _x	I _y	J	r _x	r _y
		mm	mm	mm	mm	mm ²	mm ³	mm ³	mm ³	mm ³	mm ⁴	mm ⁴	mm ⁴	mm	mm
Rafter	120X68X3	68	120	3	60.0	1092.0	35622.6	25888.4	43362.0	29166.0	2137356.0	880204.0	1906682.1	44.2	28.4
Upright Support	120X68X3	68	120	3	60.0	1092.0	35622.6	25888.4	43362.0	29166.0	2137356.0	880204.0	1906682.1	44.2	28.4
Gable Pole	120X68X3	68	120	3	60.0	1092.0	35622.6	25888.4	43362.0	29166.0	2137356.0	880204.0	1906682.1	44.2	28.4
Ridge & Eave Purlin	85X102X2	102	85	2	42.5	732.0	20705.0	22820.5	23493.0	26604.0	879961.0	1163844.0	1505792.3	34.7	39.9
Gable Beam	85X102X2	102	85	2	42.5	732.0	20705.0	22820.5	23493.0	26604.0	879961.0	1163844.0	1505792.3	34.7	39.9
Intermediate Purlin	60X60X2	60	60	2	30.0	464.0	8682.0	8682.0	10096.0	10096.0	260458.7	260458.7	390224.0	23.7	23.7
Brace	60	60	60	2	30.0	464.0	8682.0	8682.0	10096.0	10096.0	260458.7	260458.7	390224.0	23.7	23.7



4 Design Loads

4.1 Ultimate

		Distributed load (kPa)	Design load factor (-)	Factored imposed load (kPa)
Live	Q	-	1.5	-
Self weight	G	self weight	1.35, 1.2, 0.9	1.2 self weight, 0.9 self weight
3s 80km/hr gust	W	0.245 C _{fig}	1.0	0.245 C _{fig}

4.2 Load Combinations

4.2.1 Serviceability

$$\begin{aligned} \text{Gravity} &= 1.0 \times G \\ \text{Wind} &= 1.0 \times G + 1.0 \times W \end{aligned}$$



Civil & Structural Engineering Design Services Pty. Ltd.

4.2.2 Ultimate

$$\begin{aligned}\text{Downward} &= 1.35 \times G \\ &= 1.2 \times G + W_u \\ &= 1.2 \times G + W_u + W_{Is}\end{aligned}$$

$$\begin{aligned}\text{Upward} &= 0.9 \times G + W_u \\ &= 0.9 \times G + W_u + W_{IP}\end{aligned}$$

5 Wind Analysis

Wind towards surface (+ve), away from surface (-ve)

5.1 Parameters

Terrain category = 2

Site wind speed ($V_{sit,\beta}$) = $V_R M_d (M_{z,cat} M_s M_t)$

$V_R = 22.22 \text{ m/s}$ (80 km/hr)

(regional 3 s gust wind speed)

$M_d = 1$

$M_s = 1$

$M_t = 1$

$M_{z,cat} = 0.91$

(Table 4.1(B) AS1170.2)

$V_{sit,\beta} = 20.22 \text{ m/s}$

Height of structure (h) = 3.7 m

(mid of peak and eave)

Width of structure (w) = 12 m

Length of structure (l) = 15 m

Pressure (P) = $0.5 \rho_{air} (V_{sit,\beta})^2 C_{fig} C_{dyn}$
= 0.245 C_{fig} kPa

5.2 Pressure Coefficients (C_{fig})

Name	Symbol	Value	Unit	Notes	Ref.
Input					
Importance level		2			Table 3.1 - Table 3.2 (AS1170.0)
Annual probability of exceedance		Temporary			Table 3.3
Regional gust wind speed		80	Km/hr		Table 3.1
Regional gust wind speed	V_R	22.22	m/s		
Wind Direction Multipliers	M_d	1			Table 3.2 (AS1170.2)
Terrain Category Multiplier	$M_{Z,Cat}$	0.91			Table 4.1
Shield Multiplier	M_s	1			4.3 (AS1170.2)
Topographic Multiplier	M_t	1			4.4 (AS1170.2)



Civil & Structural Engineering Design Services Pty. Ltd.

Site Wind Speed	$V_{Site,\beta}$	20.22	m/s	$V_{Site,\beta} = V_R * M_d * M_{z,cat} * M_{S,M_t}$	
Pitch	α	20	Deg		
Pitch	α	0.349	rad		
Width	B	12	m		
Width Span	S_w	4	m		
Length	D	15	m		
Height	Z	3.7	m		
Bay Span		5	m		
Purlin Spacing		1.3	m		
Number of Intermediate Purlin		8			
	h/d	0.25			
	h/b	0.31			
Wind Pressure					
ρ_{air}	ρ	1.2	Kg/m ³		
dynamic response factor	C_{dyn}	1			
Wind Pressure	$\rho * C_{fig}$	0.245	Kg/m ²	$\rho = 0.5 \rho_{air} * (V_{des,\beta})^2 * C_{fig} * C_{dyn}$	2.4 (AS1170.2)
WIND DIRECTION 1 (Perpendicular to Length)					
Internal Pressure					
Opening Assumption	With Dominant Opening ($C_{pi} = n C_{pe}$)				
Internal Pressure Coefficient (Without Dominant) MIN		-0.1			Table 5.1 A
Internal Pressure Coefficient (Without Dominant) MAX		0.2			
Internal Pressure Coefficient (With Dominant) MIN		-0.1			Table 5.1B
Internal Pressure Coefficient (With Dominant) MAX		0.2			
N		0.7		$C_{pi} = N * C_{pe}$	
Combination Factor	$K_{C,i}$	1			
Internal Pressure Coefficient	$C_{p,i}$	0.70			



Civil & Structural Engineering Design Services Pty. Ltd.

MIN

Internal Pressure Coefficient

$C_{p,i}$ 0.70

MAX

External Pressure

1. Windward Wall

External Pressure Coefficient

$C_{p,e}$ 0.7

Table 5.2 A

Area Reduction Factor

K_a 1

Table 5.4

combination factor applied to internal pressures

$K_{C,e}$ 0.8

local pressure factor

K_l 1

porous cladding reduction factor

K_p 1

aerodynamic shape factor

$C_{fig,e}$ 0.56

Wind Wall Pressure

P 0.14 kPa

Edge Column Force

F 0.34 kN/m

Intermediate Column Force

F 0.69 kN/m

2. Leeward Wall

External Pressure Coefficient

$C_{p,e}$ -0.4

Table 5.2 B

Area Reduction Factor

K_a 1

Table 5.4

combination factor applied to internal pressures

$K_{C,e}$ 0.8

local pressure factor

K_l 1

porous cladding reduction factor

K_p 1

aerodynamic shape factor

$C_{fig,e}$ -0.32

Lee Wall Pressure

P -0.08 kPa

Edge Column Force

F -0.20 kN/m

Intermediate Column Force

F -0.39 kN/m

Table 5.2 C

3. Side Wall

Area Reduction Factor

K_a 1

Table 5.4

combination factor applied to internal pressures

$K_{C,e}$ 0.8

local pressure factor

K_l 1

porous cladding reduction factor

K_p 1

External Pressure Coefficient

$C_{p,e}$ -0.65

0 to 1h



Civil & Structural Engineering Design Services Pty. Ltd.

External Pressure Coefficient	$C_{P,e}$	-0.5		1h to 2h
External Pressure Coefficient	$C_{P,e}$	-0.3		2h to 3h
External Pressure Coefficient	$C_{P,e}$	-0.2		>3h
aerodynamic shape factor	$C_{fig,e}$	-0.52		0 to 1h
aerodynamic shape factor	$C_{fig,e}$	-0.4		1h to 2h
aerodynamic shape factor	$C_{fig,e}$	-0.24		2h to 3h
aerodynamic shape factor	$C_{fig,e}$	-0.16		>3h
Side Wall Pressure	P	-0.13	kPa	0 to 1h
Side Wall Pressure	P	-0.10	kPa	1h to 2h
Side Wall Pressure	P	-0.06	kPa	2h to 3h
Side Wall Pressure	P	-0.04	kPa	>3h

4. Roof Up Wind Slope

Area Reduction Factor	K_a	1		
combination factor applied to internal pressures	$K_{C,e}$	0.8		
local pressure factor	K_l	1		
porous cladding reduction factor	K_p	1		
External Pressure Coefficient MIN	$C_{P,e}$	-0.32		
External Pressure Coefficient MAX	$C_{P,e}$	0.15		
aerodynamic shape factor MIN	$C_{fig,e}$	-0.26		
aerodynamic shape factor MAX	$C_{fig,e}$	0.12		
Pressure MIN	P	-0.06	kPa	
Pressure MAX	P	0.03	kPa	
Edge Rafter Force MIN	F	-0.16	kN/m	
Edge Rafter Force Max	F	0.07	kN/m	
Intermediate Rafter Force MIN	F	-0.31	kN/m	
Intermediate Rafter Force MAX	F	0.15	kN/m	

5. Roof Down Wind Slope

Area Reduction Factor	K_a	1		
combination factor applied to internal pressures	$K_{C,e}$	0.8		
local pressure factor	K_l	1		
porous cladding reduction factor	K_p	1		
External Pressure Coefficient	$C_{P,e}$	-0.6		
aerodynamic shape factor	$C_{fig,e}$	-0.48		

$\alpha > 10^\circ$

Table 5.3 B

Table 5.3C



Civil & Structural Engineering Design Services Pty. Ltd.

Pressure MIN	P	-0.12	kPa
Pressure MAX	P	-0.12	kPa
Edge Rafter Force MIN	F	-0.29	kN/m
Edge Rafter Force MAX	F	-0.29	kN/m
Intermediate Rafter Force MIN	F	-0.59	kN/m
Intermediate Rafter Force MAX	F	-0.59	kN/m

WIND DIRECTION 2 (Parallel to Length)

Internal Pressure

Opening Assumption

With Dominant Opening ($C_{pi} = nC_{pe}$)



Internal Pressure Coefficient
(Without Dominant) **MIN**

-0.1

Table 5.1A

Internal Pressure Coefficient
(Without Dominant) **MAX**

0.2

Internal Pressure Coefficient
(With Dominant) **MIN**

-0.1

Table 5.1B

Internal Pressure Coefficient
(With Dominant) **MAX**

0.2

N

0.7

$C_{pi} = N \cdot C_{pe}$

Combination Factor

$K_{C,i}$

1

Internal Pressure Coefficient
MIN

$C_{p,i}$

0.70

Internal Pressure Coefficient
MAX

$C_{p,i}$

0.70

External Pressure

1. Windward Wall

External Pressure Coefficient

$C_{P,e}$

0.7

Area Reduction Factor

K_a

1

combination factor applied to
internal pressures

$K_{C,e}$

0.8

local pressure factor

K_l

1

porous cladding reduction factor

K_p

1

aerodynamic shape factor

$C_{fig,e}$

0.56

Wind Wall Pressure

P

0.14

kPa

Table 5.2 A

Table 5.4



Civil & Structural Engineering Design Services Pty. Ltd.

Edge Column Force	F	0.27	kN/m
Intermediate Column Force	F	0.55	kN/m

2. Leeward Wall

External Pressure Coefficient	C _{P,e}	-0.5	
Area Reduction Factor	K _a	1	
combination factor applied to internal pressures	K _{C,e}	0.8	
local pressure factor	K _l	1	
porous cladding reduction factor	K _p	1	
aerodynamic shape factor	C _{fig,e}	-0.4	
Lee Wall Pressure	P	-0.10	kPa
Edge Column Force	F	-0.20	kN/m
Intermediate Column Force	F	-0.39	kN/m

Table 5.2 B

Table 5.4

3. Side Wall

Area Reduction Factor	K_a	1		
combination factor applied to internal pressures	$K_{C,e}$	0.8		
local pressure factor	K_l	1		
porous cladding reduction factor	K_p	1		
External Pressure Coefficient	$C_{P,e}$	-0.65		0 to 1h
External Pressure Coefficient	$C_{P,e}$	-0.5		1h to 2h
External Pressure Coefficient	$C_{P,e}$	-0.3		2h to 3h
External Pressure Coefficient	$C_{P,e}$	-0.2		>3h
aerodynamic shape factor	$C_{fig,e}$	-0.52		0 to 1h
aerodynamic shape factor	$C_{fig,e}$	-0.4		1h to 2h
Side Wall Pressure	P	-0.13	kPa	0 to 1h
Side Wall Pressure	P	-0.10	kPa	1h to 2h
Side Wall Pressure	P	-0.06	kPa	2h to 3h
Side Wall Pressure	P	-0.04	kPa	>3h

Table 5.2 C

Table 5.4

4. Roof

Area Reduction Factor	K _a	1	
-----------------------	----------------	---	--

$\alpha < 10^\circ$

Table 5.3 A

ABN: 62 051 307 852

3 Wanniti Road BELROSE NSW 2085

Email: hited@bigpond.net.au

Tel: 02 9975 3899 Fax: 02 99751943

Web: www.civilandstructural.com.au



Civil & Structural Engineering Design Services Pty. Ltd.

combination factor applied to internal pressures	$K_{C,e}$	0.8		
local pressure factor	K_l	1		
porous cladding reduction factor	K_p	1		
External Pressure Coefficient MIN	$C_{P,e}$	-0.90		0 to 0.5h
External Pressure Coefficient MIN	$C_{P,e}$	-0.90		0.5 to 1h
External Pressure Coefficient MIN	$C_{P,e}$	-0.50		1h to 2h
External Pressure Coefficient MIN	$C_{P,e}$	-0.30		2h to 3h
External Pressure Coefficient MIN	$C_{P,e}$	-0.20		>3h
External Pressure Coefficient MAX	$C_{P,e}$	-0.40		0 to 0.5h
External Pressure Coefficient MAX	$C_{P,e}$	-0.40		0.5 to 1h
External Pressure Coefficient MAX	$C_{P,e}$	0.00		1h to 2h
External Pressure Coefficient MAX	$C_{P,e}$	0.10		2h to 3h
External Pressure Coefficient MAX	$C_{P,e}$	0.20		>3h
aerodynamic shape factor MIN	$C_{fig,e}$	-0.72		0 to 0.5h
aerodynamic shape factor MIN	$C_{fig,e}$	-0.72		0.5 to 1h
aerodynamic shape factor MIN	$C_{fig,e}$	-0.4		1h to 2h
aerodynamic shape factor MIN	$C_{fig,e}$	-0.24		2h to 3h
aerodynamic shape factor MIN	$C_{fig,e}$	-0.16		>3h
aerodynamic shape factor MAX	$C_{fig,e}$	-0.32		0 to 0.5h
aerodynamic shape factor MAX	$C_{fig,e}$	-0.32		0.5 to 1h
aerodynamic shape factor MAX	$C_{fig,e}$	0		1h to 2h
aerodynamic shape factor MAX	$C_{fig,e}$	0.08		2h to 3h
aerodynamic shape factor MAX	$C_{fig,e}$	0.16		>3h
Pressure MIN	P	-0.18	kPa	0 to 0.5h
Pressure MIN	P	-0.18	kPa	0.5 to 1h
Pressure MIN	P	-0.10	kPa	1h to 2h
Pressure MIN	P	-0.06	kPa	2h to 3h
Pressure MIN	P	-0.04	kPa	>3h
Pressure MAX	P	-0.08	kPa	0 to 0.5h
Pressure MAX	P	-0.08	kPa	0.5 to 1h



Civil & Structural Engineering Design Services Pty. Ltd.

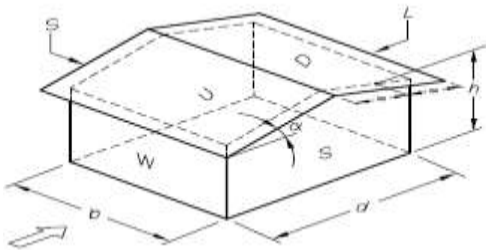
Pressure MAX	P	0.00	kPa	<i>1h to 2h</i>
Pressure MAX	P	0.02	kPa	<i>2h to 3h</i>
Pressure MAX	P	0.04	kPa	<i>>3h</i>
Edge Purlin Force MIN	F	-0.11	kN/m	<i>0 to 0.5h</i>
Edge Purlin Force MIN	F	-0.11	kN/m	<i>0.5 to 1h</i>
Edge Purlin Force MIN	F	-0.06	kN/m	<i>1h to 2h</i>
Edge Purlin Force MIN	F	-0.04	kN/m	<i>2h to 3h</i>
Edge Purlin Force MIN	F	-0.03	kN/m	<i>>3h</i>
Edge Purlin Force MAX	F	-0.05	kN/m	<i>0 to 0.5h</i>
Edge Purlin Force MAX	F	-0.05	kN/m	<i>0.5 to 1h</i>
Edge Purlin Force MAX	F	0.00	kN/m	<i>1h to 2h</i>
Edge Purlin Force MAX	F	0.01	kN/m	<i>2h to 3h</i>
Edge Purlin Force MAX	F	0.03	kN/m	<i>>3h</i>
Intermediate Purlin Force MIN	F	-0.23	kN/m	<i>0 to 0.5h</i>
Intermediate Purlin Force MIN	F	-0.23	kN/m	<i>0.5 to 1h</i>
Intermediate Purlin Force MIN	F	-0.13	kN/m	<i>1h to 2h</i>
Intermediate Purlin Force MIN	F	-0.08	kN/m	<i>2h to 3h</i>
Intermediate Purlin Force MIN	F	-0.05	kN/m	<i>>3h</i>
Intermediate Purlin Force MAX	F	-0.10	kN/m	<i>0 to 0.5h</i>
Intermediate Purlin Force MAX	F	-0.10	kN/m	<i>0.5 to 1h</i>
Intermediate Purlin Force MAX	F	0.00	kN/m	<i>1h to 2h</i>
Intermediate Purlin Force MAX	F	0.03	kN/m	<i>2h to 3h</i>
Intermediate Purlin Force MAX	F	0.05	kN/m	<i>>3h</i>



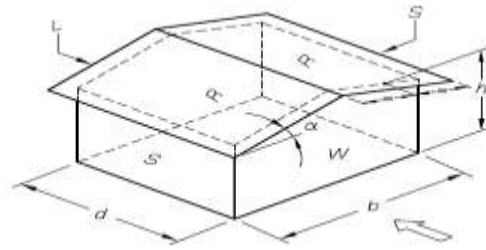
Civil & Structural Engineering Design Services Pty. Ltd.

5.2.1 Pressure summary

WIND EXTERNAL PRESSURE			Direction1 (Perpendicular to Length)		Direction2 (Parallel to Length)				
Windward (kPa)			0.14		0.14				
Leeward (kPa)			-0.08		-0.10				
Sidewall (m)	Length	(m)	(m)	(Kpa)	(Kpa)				
	0 - 1h	0	3.7	-0.13	-0.13				
	1h - 2h	3.7	7.4	-0.10	-0.10				
	2h - 3h	7.4	11.1	-0.06	-0.06				
	>3h	11.1	-	-0.04	-0.04				
Roof			Min (Kpa)	Max (Kpa)	Length	(m)	(m)	Min (Kpa)	Max (Kpa)
	Upwind Slope		-0.06	0.03	0-0.5h	0.00	1.85	-0.18	-0.08
	Downwind Slope		-0.12	-0.12	0.5h-1h	1.85	3.70	-0.18	-0.08
					1h-2h	3.70	7.40	-0.10	0.00
					2h-3h	7.40	11.10	-0.06	0.02
					>3h	11.10	-	-0.04	0.04
	Wind Internal Pressure (kPa)			Min (kPa)	Max (kPa)	Min (kPa)			Max (kPa)
Proportion of Cpe				Proportion of Cpe	Proportion of Cpe			Proportion of Cpe	



Direction 1

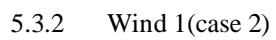


Direction 2

AS1170.2



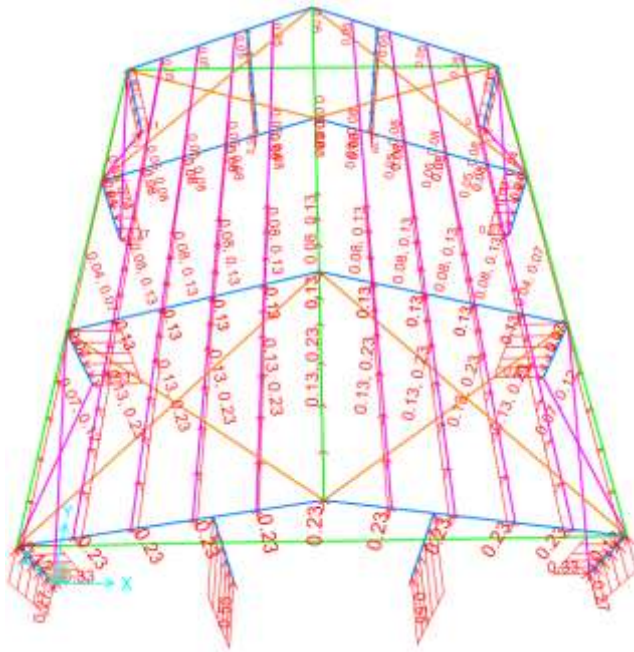
5.3.1 Wind 1(case 1)



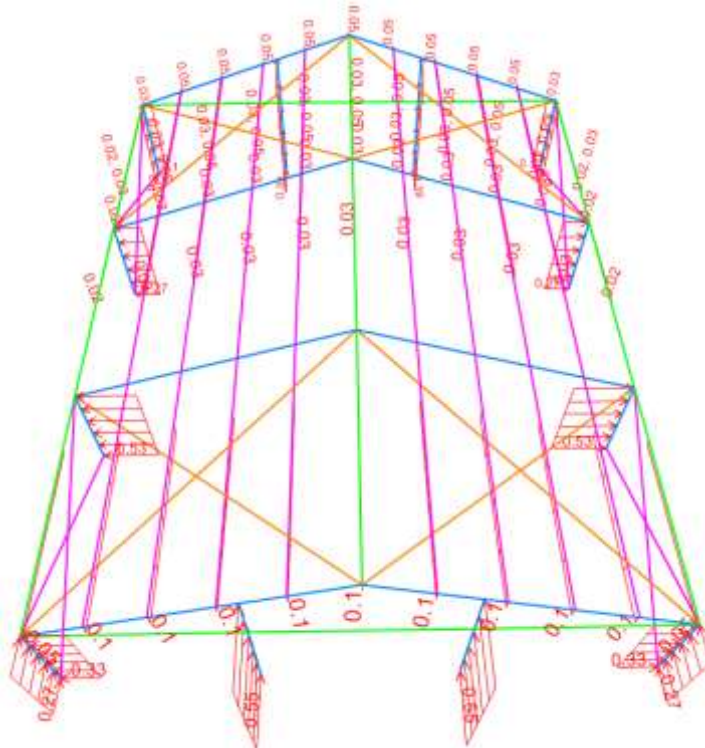


Civil & Structural Engineering Design Services Pty. Ltd.

5.3.3 Wind 2(Case1)



5.3.4 Wind 2(case 2)



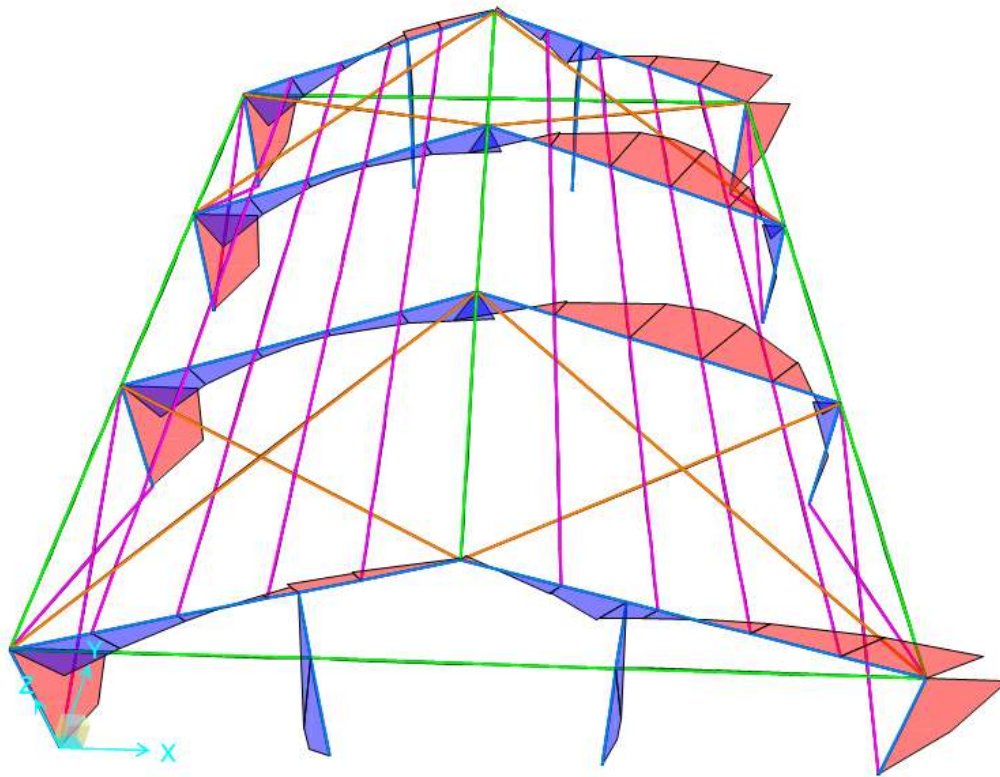
After 3D model analysis, each member is checked based on adverse load combination.

In this regard the maximum bending moment, shear and axial force due to adverse load combinations for each member are presented as below:

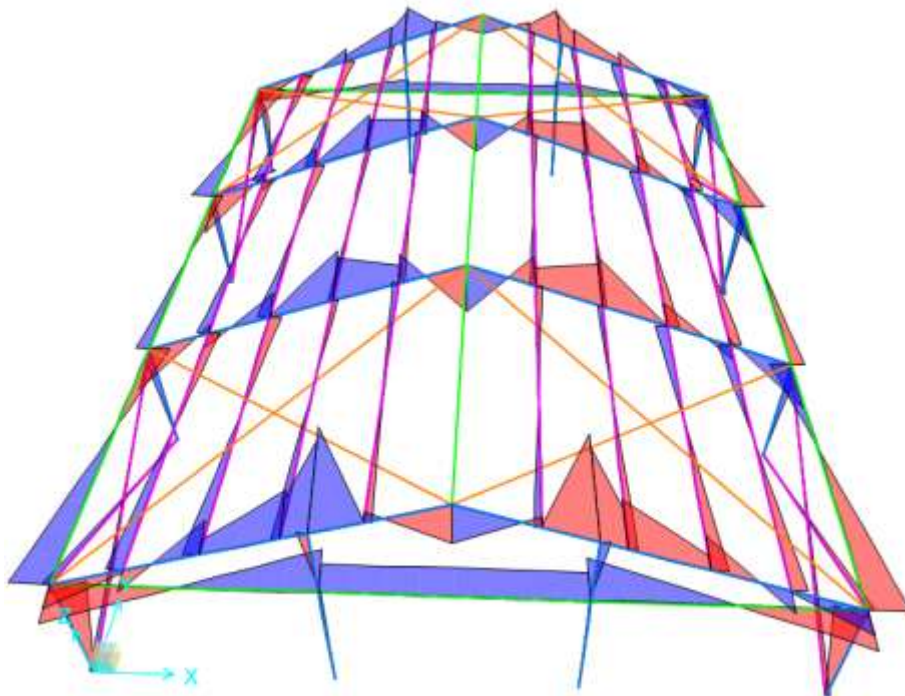


Civil & Structural Engineering Design Services Pty. Ltd.

5.3.5 Max Bending Moment due to critical load combination in major axis



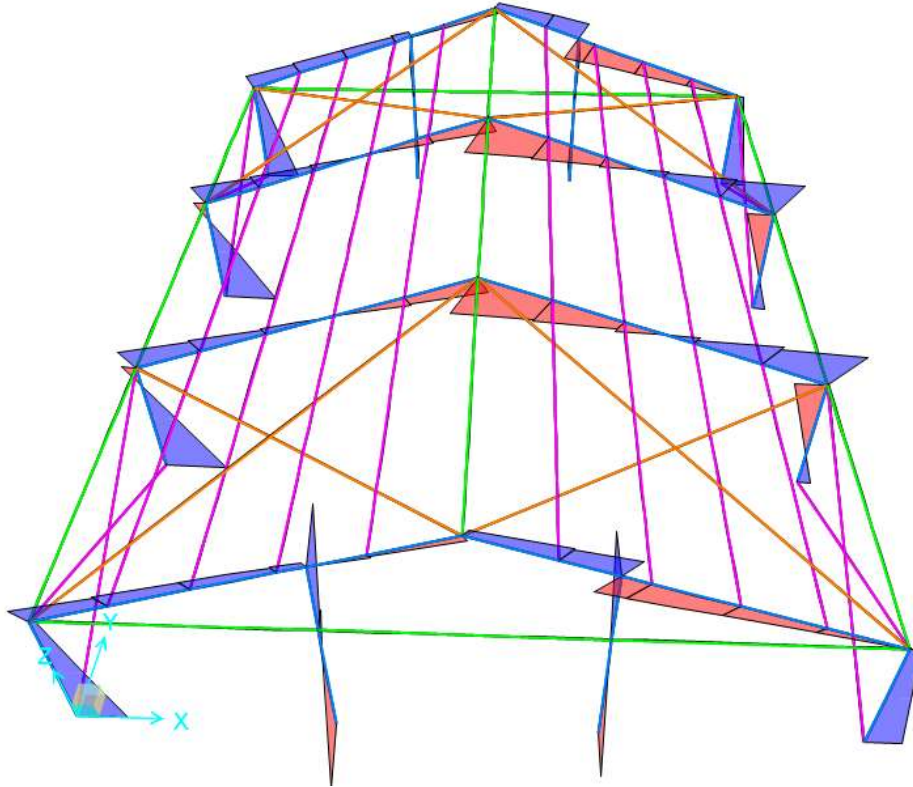
5.3.6 Max Bending Moment in minor axis due to critical load combination



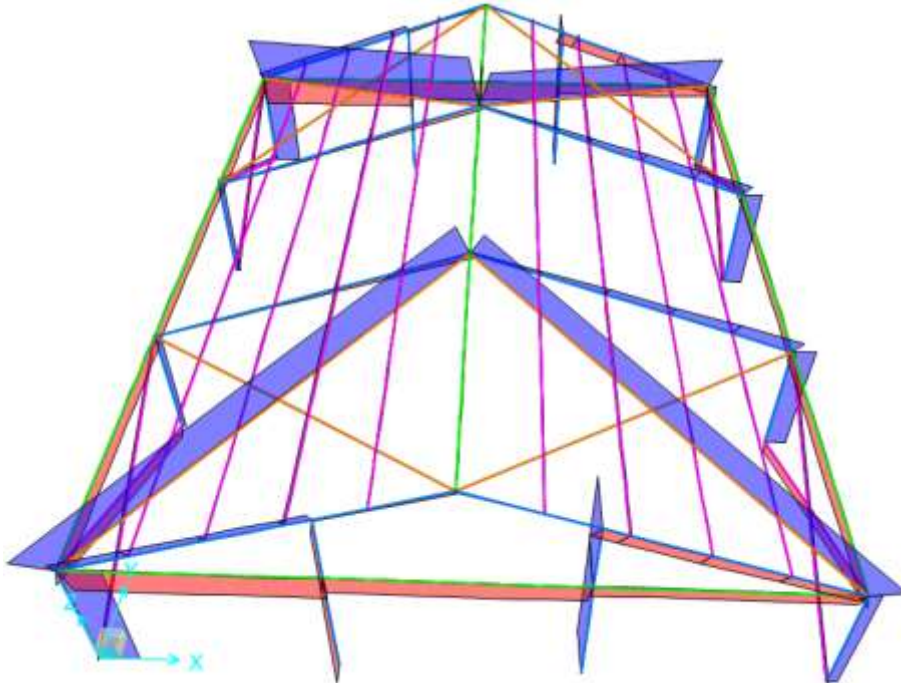


Civil & Structural Engineering Design Services Pty. Ltd.

5.3.7 Max Shear in due to critical load combination



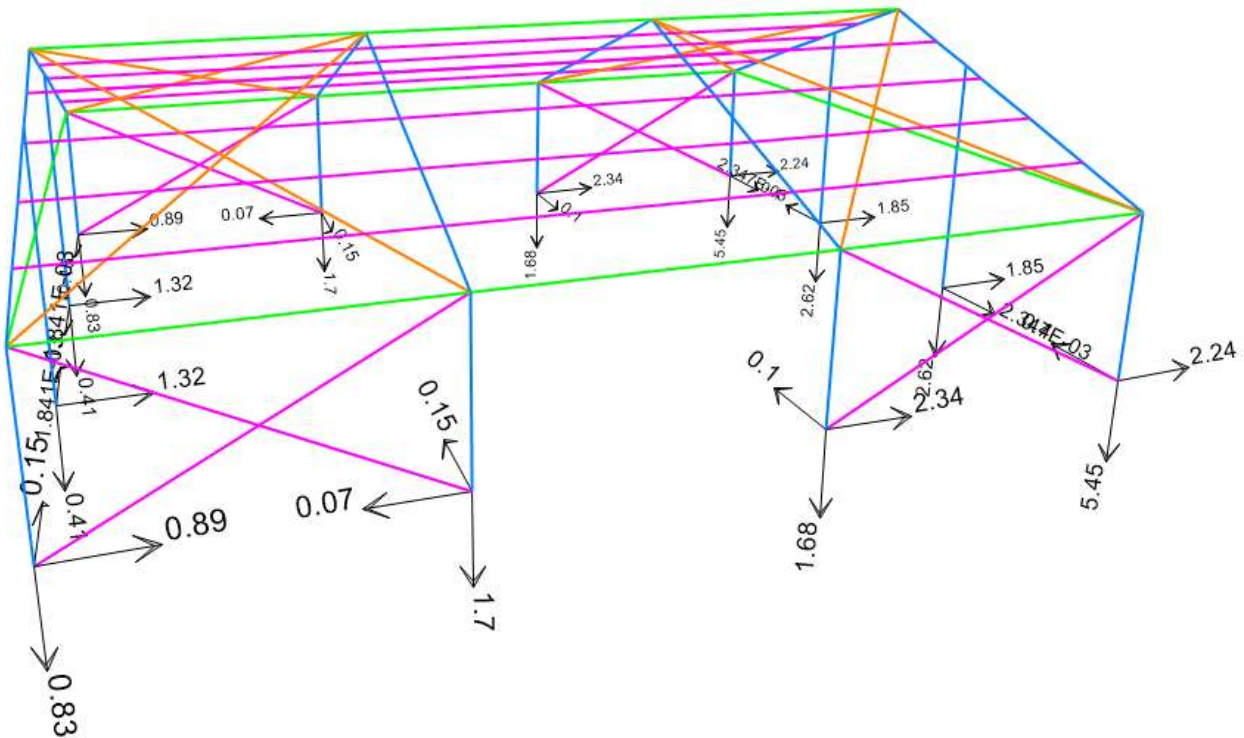
5.3.8 Max Axial force in upright support and roof beam due to critical load combination





Civil & Structural Engineering Design Services Pty. Ltd.

5.3.9 Max reactions



Max Reaction (Bearing) $N^* = 3.1 \text{ kN}$
 Max Reaction (Uplift) $N^* = 5.5 \text{ kN}$

5.3.10 Summary Table:

MEMBER(S)	Section	b	d	t	Vx	Vy	P (Axial) Negative -> Compression Positive -> Tension	Mx	My
		mm	mm	mm	kN	kN	kN	kN.m	kN.m
Rafter	120X68X3	68	120	3	2.322	-0.449	3.488	2.9133	-0.4735
Upright Support	120X68X3	68	120	3	2.258	-0.045	3.021	-2.7853	0.1159
Gable Pole	120X68X3	68	120	3	0.344	1.436	-2.818	1.3461	1.9626
Ridge & Eave Purlin	85X102X2	102	85	2	-0.03	5.2E-16	-0.672	-1.0953	-1.105E-16
Gable Beam	85X102X2	102	85	2	0.035	0.099	-7.114	-2.776E-17	-0.2196
Intermediate Purlin	60X60X2	60	60	2	-0.03	0.015	-0.799	-1.1153	0.0107
Brace	60	60	60	2	0.028	0.018	-2.706	0	-0.0506



Civil & Structural Engineering Design Services Pty. Ltd.

6 Checking Members Based on AS1664.1 ALUMINIUM LSD

6.1 Rafter

NAME	SYMBOL	VALUE	UNIT	NOTES	REF
120X68X3	Rafter				
Alloy and temper	6061-T6				AS1664.1
Tension	F_{tu}	= 262	MPa	Ultimate	T3.3(A)
	F_{ty}	= 241	MPa	Yield	
Compression	F_{cy}	= 241	MPa		
Shear	F_{su}	= 165	MPa	Ultimate	
	F_{sy}	= 138	MPa	Yield	
Bearing	F_{bu}	= 551	MPa	Ultimate	
	F_{by}	= 386	MPa	Yield	
Modulus of elasticity	E	= 70000	MPa	Compressive	
	k_t	= 1.0			T3.4(B)
	k_c	= 1.0			
FEM ANALYSIS RESULTS					
Axial force	P	= 0	kN	compression	
	P	= 3.488	kN	Tension	
In plane moment	M_x	= 2.9133	kNm		
Out of plane moment	M_y	= 0.4735	kNm		
DESIGN STRESSES					
Gross cross section area	A_g	= 1092	mm ²		
In-plane elastic section modulus	Z_x	= 35622.6	mm ³		
Out-of-plane elastic section mod.	Z_y	= 25888.35	mm ³		
Stress from axial force	f_a	= P/A_g			
		= 0.00	MPa	compression	
		= 3.19	MPa	Tension	
Stress from in-plane bending	f_{bx}	= M_x/Z_x			
		= 81.78	MPa	compression	
Stress from out-of-plane bending	f_{by}	= M_y/Z_y			
		= 18.29	MPa	compression	
Tension					
3.4.3 Tension in rectangular tubes					



Civil & Structural Engineering Design Services Pty. Ltd.

	ϕF_L	=	228.95	MPa		
		O				
		R				
	ϕF_L	=	222.70	MPa		
COMPRESSION						
3.4.8 Compression in columns, axial, gross section						
<i>1. General</i>						... 3.4.8.1
Unsupported length of member	L	=	6400	mm		
Effective length factor	k	=	1			
Radius of gyration about buckling axis (Y)	r_y	=	28.39	mm		
Radius of gyration about buckling axis (X)	r_x	=	44.24	mm		
Slenderness ratio	kLb/r_y	=	45.79			
Slenderness ratio	kL/r_x	=	144.66			
Slenderness parameter	λ	=	2.702			
	D_c^*	=	90.3			
	S_1^*	=	0.33			
	S_2^*	=	1.23			
	ϕ_{cc}	=	0.950			
Factored limit state stress	ϕF_L	=	31.36	MPa		
<i>2. Sections not subject to torsional or torsional-flexural buckling</i>						... 3.4.8.2
Largest slenderness ratio for flexural buckling	kL/r	=	144.66			
3.4.10 Uniform compression in components of columns, gross section - flat plates						
<i>1. Uniform compression in components of columns, gross section - flat plates with both edges supported</i>						... 3.4.10.1 T3.3(D)
	k_1	=	0.35			
Max. distance between toes of fillets of supporting elements for plate	b'	=	62			
	t	=	3	mm		
Slenderness	b/t	=	20.66666 7			
Limit 1	S_1	=	12.34			
Limit 2	S_2	=	32.87			
Factored limit state stress	ϕF_L	=	205.58	MPa		



Civil & Structural Engineering Design Services Pty. Ltd.

Most adverse compressive limit state stress	F_a	=	31.36	MPa		
Most adverse tensile limit state stress	F_a	=	222.70	MPa		
Most adverse compressive & Tensile capacity factor	f_a/F_a	=	0.01		PASS	
BENDING - IN-PLANE						
3.4.15 Compression in beams, extreme fibre, gross section rectangular tubes, box sections						
Unbraced length for bending	L_b	=	1300	mm		
Second moment of area (weak axis)	I_y	=	8.80E+05	mm ⁴		
Torsion modulus	J	=	1.91E+06	mm ³		
Elastic section modulus	Z	=	35622.6	mm ³		
Slenderness	S	=	71.49			
Limit 1	S_1	=	0.39			
Limit 2	S_2	=	1695.86			
Factored limit state stress	ϕF_L	=	210.99	MPa		3.4.15(2)
3.4.17 Compression in components of beams (component under uniform compression), gross section - flat plates with both edges supported						
	k_1	=	0.5			T3.3(D)
	k_2	=	2.04			T3.3(D)
Max. distance between toes of fillets of supporting elements for plate	b'	=	62	mm		
	t	=	3	mm		
Slenderness	b/t	=	20.666667			
Limit 1	S_1	=	12.34			
Limit 2	S_2	=	46.95			
Factored limit state stress	ϕF_L	=	205.58	MPa		
Most adverse in-plane bending limit state stress	F_{bx}	=	205.58	MPa		
Most adverse in-plane bending capacity factor	f_{bx}/F_{bx}	=	0.40		PASS	
BENDING - OUT-OF-PLANE						



Civil & Structural Engineering Design Services Pty. Ltd.

NOTE: Limit state stresses, ϕF_L are the same for out-of-plane bending (doubly symmetric section)

Factored limit state stress $\phi F_L = 205.58 \text{ MPa}$

Most adverse out-of-plane bending limit state stress $F_{by} = 205.58 \text{ MPa}$

Most adverse out-of-plane bending capacity factor $f_{by}/F_{by} = 0.09$ **PASS**

COMBINED ACTIONS

4.1.1 Combined compression and bending

$F_a = 31.36 \text{ MPa}$

$F_{ao} = 205.58 \text{ MPa}$

$F_{bx} = 205.58 \text{ MPa}$

$F_{by} = 205.58 \text{ MPa}$

$f_a/F_a = 0.014$

Check: $f_a/F_a + f_{bx}/F_{bx} + f_{by}/F_{by} \leq 1.0$

i.e. $0.50 \leq 1.0$

PASS

SHEAR

3.4.24 Shear in webs (Major Axis)

Clear web height $h = 114 \text{ mm}$

$t = 3 \text{ mm}$

Slenderness $h/t = 38$

Limit 1 $S_1 = 29.01$

Limit 2 $S_2 = 59.31$

Factored limit state stress $\phi F_L = 122.00 \text{ MPa}$

Stress From Shear force $f_{sx} = V/A_w = 3.39 \text{ MPa}$

3.4.25 Shear in webs (Minor Axis)

Clear web height $b = 62 \text{ mm}$

$t = 3 \text{ mm}$

Slenderness $b/t = 20.66666$

Factored limit state stress $\phi F_L = 131.10 \text{ MPa}$



Civil & Structural Engineering Design Services Pty. Ltd.

Stress From Shear force	f_{sy}	=	V/A_w	
			1.21	MPa

6.2 Upright Supports

NAME	SYMBOL	VALUE	UNIT	NOTES	REF
120X68X3	Upright Support				
Alloy and temper	6061-T6				AS1664.1
Tension	F_{tu}	= 262	MPa	Ultimate	T3.3(A)
	F_{ty}	= 241	MPa	Yield	
Compression	F_{cy}	= 241	MPa		
Shear	F_{su}	= 165	MPa	Ultimate	
	F_{sy}	= 138	MPa	Yield	
Bearing	F_{bu}	= 551	MPa	Ultimate	
	F_{by}	= 386	MPa	Yield	
Modulus of elasticity	E	= 70000	MPa	Compressive	
	k_t	= 1.0			T3.4(B)
	k_c	= 1.0			
FEM ANALYSIS RESULTS					
Axial force	P	= 0	kN	compression	
	P	= 3.021	kN	Tension	
In plane moment	M_x	= 2.7853	kNm		
Out of plane moment	M_y	= 0.1159	kNm		
DESIGN STRESSES					
Gross cross section area	A_g	= 1092	mm ²		
In-plane elastic section modulus	Z_x	= 35622.6	mm ³		
Out-of-plane elastic section mod.	Z_y	= 25888.353	mm ³		
Stress from axial force	f_a	= P/A_g			
		= 0.00	MPa	compression	
		= 2.77	MPa	Tension	
Stress from in-plane bending	f_{bx}	= M_x/Z_x			
		= 78.19	MPa	compression	
Stress from out-of-plane bending	f_{by}	= M_y/Z_y			
		= 4.48	MPa	compression	



<i>Tension</i>					
3.4.3 Tension in rectangular tubes					
	ϕF_L	=	228.95	MPa	
		O			
		R			
	ϕF_L	=	222.70	MPa	
COMPRESSION					
3.4.8 Compression in columns, axial, gross section					
<i>1. General</i>					... 3.4.8.1
Unsupported length of member	L	=	2600	mm	
Effective length factor	k	=	1		
Radius of gyration about buckling axis (Y)	r_y	=	28.39	mm	
Radius of gyration about buckling axis (X)	r_x	=	44.24	mm	
Slenderness ratio	kLb/r_y	=	91.58		
Slenderness ratio	kL/r_x	=	58.77		
Slenderness parameter	λ	=	1.71		
	D_c^*	=	90.3		
	S_1^*	=	0.33		
	S_2^*	=	1.23		
	ϕ_{cc}	=	0.819		
Factored limit state stress	ϕF_L	=	67.51	MPa	
<i>2. Sections not subject to torsional or torsional-flexural buckling</i>					... 3.4.8.2
Largest slenderness ratio for flexural buckling	kL/r	=	91.58		
3.4.10 Uniform compression in components of columns, gross section - flat plates					
<i>1. Uniform compression in components of columns, gross section - flat plates with both edges supported</i>					... 3.4.10.1 T3.3(D)
	k_1	=	0.35		
Max. distance between toes of fillets of supporting elements for plate	b'	=	62		
	t	=	3	mm	
Slenderness	b/t	=	20.66666 7		
Limit 1	S_1	=	12.34		



Civil & Structural Engineering Design Services Pty. Ltd.

Limit 2	S_2	=	32.87		
Factored limit state stress	ϕF_L	=	205.58	MPa	
Most adverse compressive limit state stress	F_a	=	67.51	MPa	
Most adverse tensile limit state stress	F_a	=	222.70	MPa	
Most adverse compressive & Tensile capacity factor	f_a/F_a	=	0.01		PASS
BENDING - IN-PLANE					
3.4.15 <i>Compression in beams, extreme fibre, gross section rectangular tubes, box sections</i>					
Unbraced length for bending	L_b	=	2600	mm	
Second moment of area (weak axis)	I_y	=	8.80E+05	mm ⁴	
Torsion modulus	J	=	1.91E+06	mm ³	
Elastic section modulus	Z	=	35622.6	mm ³	
Slenderness	S	=	142.99		
Limit 1	S_1	=	0.39		
Limit 2	S_2	=	1695.86		
Factored limit state stress	ϕF_L	=	202.96	MPa	3.4.15(2)
3.4.17 <i>Compression in components of beams (component under uniform compression), gross section - flat plates with both edges supported</i>					
	k_1	=	0.5		T3.3(D)
	k_2	=	2.04		T3.3(D)
Max. distance between toes of fillets of supporting elements for plate	b'	=	62	mm	
	t	=	3	mm	
Slenderness	b/t	=	20.666667		
Limit 1	S_1	=	12.34		
Limit 2	S_2	=	46.95		
Factored limit state stress	ϕF_L	=	205.58	MPa	
Most adverse in-plane bending limit state stress	F_{bx}	=	202.96	MPa	



Civil & Structural Engineering Design Services Pty. Ltd.

Most adverse in-plane bending capacity factor	f_{bx}/F_{bx}	=	0.39	PASS	
BENDING - OUT-OF-PLANE					
NOTE: Limit state stresses, ϕF_L are the same for out-of-plane bending (doubly symmetric section)					
Factored limit state stress	ϕF_L	=	202.96 MPa		
Most adverse out-of-plane bending limit state stress	F_{by}	=	202.96 MPa		
Most adverse out-of-plane bending capacity factor	f_{by}/F_{by}	=	0.02	PASS	
COMBINED ACTIONS					
4.1.1 Combined compression and bending					
	F_a	=	67.51 MPa		... 4.1.1(2)
	F_{ao}	=	205.58 MPa		... 3.4.8
	F_{bx}	=	202.96 MPa		... 3.4.10
	F_{by}	=	202.96 MPa		... 3.4.17
	f_a/F_a	=	0.012		... 3.4.17
Check:	$f_a/F_a + f_{bx}/F_{bx} + f_{by}/F_{by} \leq 1.0$... 4.1.1(3)
i.e.	0.42	\leq	1.0	PASS	
SHEAR					
3.4.24 Shear in webs (Major Axis)					
Clear web height	h	=	114 mm		... 4.1.1(2)
	t	=	3 mm		
Slenderness	h/t	=	38		
Limit 1	S_1	=	29.01		
Limit 2	S_2	=	59.31		
Factored limit state stress	ϕF_L	=	122.00 MPa		
Stress From Shear force	f_{sx}	=	V/A_w		
			3.30 MPa		
3.4.25 Shear in webs (Minor Axis)					
Clear web height	b	=	62 mm		



Civil & Structural Engineering Design Services Pty. Ltd.

	t	=	3	mm		
Slenderness	b/t	=	20.66666 7			
Factored limit state stress	ϕF_L	=	131.10	MPa		
Stress From Shear force	f_{sy}	=	V/A _w 0.12	MPa		

6.3 Gable Pole

NAME	SYMBOL	VALUE	UNIT	NOTES	REF
120X68X3	Gable Pole				
Alloy and temper	6061-T6				AS1664.1
Tension	F_{tu}	=	262	MPa	Ultimate
	F_{ty}	=	241	MPa	Yield
Compression	F_{cy}	=	241	MPa	
Shear	F_{su}	=	165	MPa	Ultimate
	F_{sy}	=	138	MPa	Yield
Bearing	F_{bu}	=	551	MPa	Ultimate
	F_{by}	=	386	MPa	Yield
Modulus of elasticity	E	=	70000	MPa	Compressive
	k_t	=	1.0		
	k_c	=	1.0		
FEM ANALYSIS RESULTS					
Axial force	P	=	2.818	kN	compression
	P	=	0	kN	Tension
In plane moment	M_x	=	1.3461	kNm	
Out of plane moment	M_y	=	1.9626	kNm	
DESIGN STRESSES					
Gross cross section area	A_g	=	1092	mm ²	
In-plane elastic section modulus	Z_x	=	35622.6	mm ³	
Out-of-plane elastic section mod.	Z_y	=	25888.353	mm ³	
Stress from axial force	f_a	=	P/A _g		
		=	2.58	MPa	compression
		=	0.00	MPa	Tension



Civil & Structural Engineering Design Services Pty. Ltd.

Stress from in-plane bending	f_{bx}	=	M_x/Z_x		
		=	37.79	MPa	<i>compression</i>
Stress from out-of-plane bending	f_{by}	=	M_y/Z_y		
		=	75.81	MPa	<i>compression</i>
Tension					
3.4.3 Tension in rectangular tubes					
	ϕF_L	=	228.95	MPa	
		OR			
	ϕF_L	=	222.70	MPa	
COMPRESSION					
3.4.8 Compression in columns, axial, gross section					
1. General					
Unsupported length of member	L	=	4060	mm	... 3.4.8.1
Effective length factor	k	=	1		
Radius of gyration about buckling axis (Y)	r_y	=	28.39	mm	
Radius of gyration about buckling axis (X)	r_x	=	44.24	mm	
Slenderness ratio	kLb/r_y	=	91.58		
Slenderness ratio	kL/r_x	=	91.77		
Slenderness parameter	λ	=	1.71		
	D_c^*	=	90.3		
	S_1^*	=	0.33		
	S_2^*	=	1.23		
	ϕ_{cc}	=	0.820		
Factored limit state stress	ϕF_L	=	67.27	MPa	
2. Sections not subject to torsional or torsional-flexural buckling					
Largest slenderness ratio for flexural buckling	kL/r	=	91.77		... 3.4.8.2
3.4.10 Uniform compression in components of columns, gross section - flat plates					
1. Uniform compression in components of columns, gross section - flat plates with both edges supported					
	k_1	=	0.35		... 3.4.10.1 T3.3(D)



Civil & Structural Engineering Design Services Pty. Ltd.

Max. distance between toes of fillets of supporting elements for plate	b'	=	62		
	t	=	3	mm	
Slenderness	b/t	=	20.666667		
Limit 1	S_1	=	12.34		
Limit 2	S_2	=	32.87		
Factored limit state stress	ϕF_L	=	205.58	MPa	
Most adverse compressive limit state stress	F_a	=	67.27	MPa	
Most adverse tensile limit state stress	F_a	=	222.70	MPa	
Most adverse compressive & Tensile capacity factor	f_a/F_a	=	0.04		PASS
BENDING - IN-PLANE					
3.4.15 <i>Compression in beams, extreme fibre, gross section rectangular tubes, box sections</i>					
Unbraced length for bending	L_b	=	2600	mm	
Second moment of area (weak axis)	I_y	=	880204	mm ⁴	
Torsion modulus	J	=	1906682.1	mm ³	
Elastic section modulus	Z	=	35622.6	mm ³	
Slenderness	S	=	142.99		
Limit 1	S_1	=	0.39		
Limit 2	S_2	=	1695.86		
Factored limit state stress	ϕF_L	=	202.96	MPa	3.4.15(2)
3.4.17 <i>Compression in components of beams (component under uniform compression), gross section - flat plates with both edges supported</i>					
	k_1	=	0.5		T3.3(D)
	k_2	=	2.04		T3.3(D)
Max. distance between toes of fillets of supporting elements for plate	b'	=	62	mm	
	t	=	3	mm	
Slenderness	b/t	=	20.666667		
Limit 1	S_1	=	12.34		



Civil & Structural Engineering Design Services Pty. Ltd.

Limit 2	S_2	=	46.95		
Factored limit state stress	ϕF_L	=	205.58 MPa		
Most adverse in-plane bending limit state stress	F_{bx}	=	202.96 MPa		
Most adverse in-plane bending capacity factor	f_{bx}/F_{bx}	=	0.19	PASS	
BENDING - OUT-OF-PLANE					
NOTE: Limit state stresses, ϕF_L are the same for out-of-plane bending (doubly symmetric section)					
Factored limit state stress	ϕF_L	=	202.96 MPa		
Most adverse out-of-plane bending limit state stress	F_{by}	=	202.96 MPa		
Most adverse out-of-plane bending capacity factor	f_{by}/F_{by}	=	0.37	PASS	
COMBINED ACTIONS					
4.1.1 Combined compression and bending					
	F_a	=	67.27 MPa		... 4.1.1(2)
	F_{ao}	=	205.58 MPa		... 3.4.8
	F_{bx}	=	202.96 MPa		... 3.4.10
	F_{by}	=	202.96 MPa		... 3.4.17
	f_a/F_a	=	0.038		... 3.4.17
Check:	$f_a/F_a + f_{bx}/F_{bx} + f_{by}/F_{by} \leq 1.0$... 4.1.1 (3)
i.e.	0.60	\leq	1.0	PASS	
SHEAR					
3.4.24 Shear in webs (Major Axis)					
Clear web height	h	=	114 mm		... 4.1.1(2)
	t	=	3 mm		
Slenderness	h/t	=	38		
Limit 1	S_1	=	29.01		
Limit 2	S_2	=	59.31		



Civil & Structural Engineering Design Services Pty. Ltd.

Factored limit state stress	ϕF_L	=	122.00	MPa		
Stress From Shear force	f_{sx}	=	V/A_w			
			0.50	MPa		
3.4.25 Shear in webs (Minor Axis)						
Clear web height	b	=	62	mm		
	t	=	3	mm		
Slenderness	b/t	=	20.666667			
Factored limit state stress	ϕF_L	=	131.10	MPa		
Stress From Shear force	f_{sy}	=	V/A_w			
			3.86	MPa		

6.4 Ridge & Eave Purlin

NAME	SYMBOL	VALUE	UNIT	NOTES	REF
85X102X2	Ridge & Eave Purlin				
Alloy and temper	6061-T6				AS1664.1
Tension	F_{tu}	=	262	MPa	Ultimate
	F_{ty}	=	241	MPa	Yield
Compression	F_{cy}	=	241	MPa	
Shear	F_{su}	=	165	MPa	Ultimate
	F_{sy}	=	138	MPa	Yield
Bearing	F_{bu}	=	551	MPa	Ultimate
	F_{by}	=	386	MPa	Yield
Modulus of elasticity	E	=	70000	MPa	Compressive
	k_t	=	1.0		
	k_c	=	1.0		
FEM ANALYSIS RESULTS					
Axial force	P	=	0.672	kN	compression
	P	=	0	kN	Tension
In plane moment	M_x	=	1.0953	kNm	
Out of plane moment	M_y	=	1.105E-16	kNm	
DESIGN STRESSES					



Civil & Structural Engineering Design Services Pty. Ltd.

Gross cross section area	A_g	=	732	mm ²		
In-plane elastic section modulus	Z_x	=	20704.96	mm ³		
Out-of-plane elastic section mod.	Z_y	=	22820.47	mm ³		
Stress from axial force	f_a	=	P/A_g			
		=	0.92	MPa	compression	
		=	0.00	MPa	Tension	
Stress from in-plane bending	f_{bx}	=	M_x/Z_x			
		=	52.90	MPa	compression	
Stress from out-of-plane bending	f_{by}	=	M_y/Z_y			
		=	0.00	MPa	compression	
Tension						
3.4.3 Tension in rectangular tubes						
	ϕF_L	=	228.95	MPa		
		O R				
	ϕF_L	=	222.70	MPa		
COMPRESSION						
3.4.8 Compression in columns, axial, gross section						
1. General						...
						3.4.8.1
Unsupported length of member	L	=	5000	mm		
Effective length factor	k	=	1			
Radius of gyration about buckling axis (Y)	r_y	=	39.87	mm		
Radius of gyration about buckling axis (X)	r_x	=	34.67	mm		
Slenderness ratio	kLb/r_y	=	125.39			
Slenderness ratio	kL/r_x	=	144.21			
Slenderness parameter	λ	=	2.69			
	D_c^*	=	90.3			
	S_1^*	=	0.33			
	S_2^*	=	1.23			
	ϕ_{cc}	=	0.950			
Factored limit state stress	ϕF_L	=	31.56	MPa		
2. Sections not subject to torsional or torsional-flexural buckling						...
						3.4.8.2



Civil & Structural Engineering Design Services Pty. Ltd.

Largest slenderness ratio for flexural buckling	kL/r	=	144.21		
3.4.10 Uniform compression in components of columns, gross section - flat plates					
<i>1. Uniform compression in components of columns, gross section - flat plates with both edges supported</i>					
	k_1	=	0.35		3.4.10.1
Max. distance between toes of fillets of supporting elements for plate	b'	=	98		T3.3(D)
	t	=	2	mm	
Slenderness	b/t	=	49		
Limit 1	S_1	=	12.34		
Limit 2	S_2	=	32.87		
Factored limit state stress	ϕF_L	=	114.67	MPa	
Most adverse compressive limit state stress	F_a	=	31.56	MPa	
Most adverse tensile limit state stress	F_a	=	222.70	MPa	
Most adverse compressive & Tensile capacity factor	f_a/F_a	=	0.03		PASS
BENDING - IN-PLANE					
3.4.15 Compression in beams, extreme fibre, gross section rectangular tubes, box sections					
Unbraced length for bending	L_b	=	5000	mm	
Second moment of area (weak axis)	I_y	=	1163844	mm ⁴	
Torsion modulus	J	=	1505792.3	mm ³	
Elastic section modulus	Z	=	20704.965	mm ³	
Slenderness	S	=	156.40		
Limit 1	S_1	=	0.39		
Limit 2	S_2	=	1695.86		
Factored limit state stress	ϕF_L	=	201.70	MPa	3.4.15(2)



Civil & Structural Engineering Design Services Pty. Ltd.

3.4.17 Compression in components of beams (component under uniform compression), gross section - flat plates with both edges supported					
	k_1	=	0.5		T3.3(D)
	k_2	=	2.04		T3.3(D)
Max. distance between toes of fillets of supporting elements for plate	b'	=	98 mm		
	t	=	2 mm		
Slenderness	b/t	=	49		
Limit 1	S_1	=	12.34		
Limit 2	S_2	=	46.95		
Factored limit state stress	ϕF_L	=	103.05 MPa		
Most adverse in-plane bending limit state stress	F_{bx}	=	103.05 MPa		
Most adverse in-plane bending capacity factor	f_{bx}/F_{bx}	=	0.51	PASS	
BENDING - OUT-OF-PLANE					
<i>NOTE: Limit state stresses, ϕF_L are the same for out-of-plane bending (doubly symmetric section)</i>					
Factored limit state stress	ϕF_L	=	103.05 MPa		
Most adverse out-of-plane bending limit state stress	F_{by}	=	103.05 MPa		
Most adverse out-of-plane bending capacity factor	f_{by}/F_{by}	=	0.00	PASS	
COMBINED ACTIONS					
4.1.1 Combined compression and bending					...
	F_a	=	31.56 MPa		4.1.1(2)
	F_{ao}	=	114.67 MPa		... 3.4.8
	F_{bx}	=	103.05 MPa		... 3.4.10
	F_{by}	=	103.05 MPa		... 3.4.17
	f_a/F_a	=	0.029		... 3.4.17
Check: $f_a/F_a + f_{bx}/F_{bx} + f_{by}/F_{by} \leq 1.0$... 4.1.1 (3)



Civil & Structural Engineering Design Services Pty. Ltd.

i.e.	0.54	≤	1.0	PASS	
SHEAR					
3.4.24 Shear in webs (Major Axis)					4.1.1(2)
Clear web height	h	=	81	mm	
	t	=	2	mm	
Slenderness	h/t	=	40.5		
Limit 1	S ₁	=	29.01		
Limit 2	S ₂	=	59.31		
Factored limit state stress	ϕF_L	=	119.46	MPa	
Stress From Shear force	f_{sx}	=	V/A _w		
			0.09	MPa	
3.4.25 Shear in webs (Minor Axis)					
Clear web height	b	=	98	mm	
	t	=	2	mm	
Slenderness	b/t	=	49		
Factored limit state stress	ϕF_L	=	110.86	MPa	
Stress From Shear force	f_{sy}	=	V/A _w		
			0.00	MPa	

6.5 Gable Beam

NAME	SYMBOL	VALUE	UNIT	NOTES	REF
85X102X2	Gable Beam				
Alloy and temper	6061-T6				AS1664.1
Tension	F _{tu}	=	262	MPa	Ultimate
	F _{ty}	=	241	MPa	Yield
Compression	F _{cy}	=	241	MPa	
Shear	F _{su}	=	165	MPa	Ultimate
	F _{sy}	=	138	MPa	Yield
Bearing	F _{bu}	=	551	MPa	Ultimate
	F _{by}	=	386	MPa	Yield
Modulus of elasticity	E	=	70000	MPa	Compressive
	k _t	=	1.0		T3.4(B)



Civil & Structural Engineering Design Services Pty. Ltd.

	k_c	=	1.0		
FEM ANALYSIS RESULTS					
Axial force	P	=	7.114 kN	compression	
	P	=	0 kN	Tension	
In plane moment	M_x	=	2.776E-17 kNm		
Out of plane moment	M_y	=	0.2196 kNm		
DESIGN STRESSES					
Gross cross section area	A_g	=	732 mm ²		
In-plane elastic section modulus	Z_x	=	20704.965 mm ³		
Out-of-plane elastic section mod.	Z_y	=	22820.471 mm ³		
Stress from axial force	f_a	=	P/A_g		
		=	9.72 MPa	compression	
		=	0.00 MPa	Tension	
Stress from in-plane bending	f_{bx}	=	M_x/Z_x		
		=	0.00 MPa	compression	
Stress from out-of-plane bending	f_{by}	=	M_y/Z_y		
		=	9.62 MPa	compression	
Tension					
3.4.3 Tension in rectangular tubes					
	ϕF_L	=	228.95 MPa		
		OR			
	ϕF_L	=	222.70 MPa		
COMPRESSION					
3.4.8 Compression in columns, axial, gross section					
1. General					
Unsupported length of member	L	=	4000 mm		
Effective length factor	k	=	1		
Radius of gyration about buckling axis (Y)	r_y	=	39.87 mm		
Radius of gyration about buckling axis (X)	r_x	=	34.67 mm		
Slenderness ratio	kLb/r_y	=	100.32		
Slenderness ratio	kL/r_x	=	115.37		
Slenderness parameter	λ	=	2.15		
	D_c^*	=	90.3		



Civil & Structural Engineering Design Services Pty. Ltd.

	S_1^*	=	0.33		
	S_2^*	=	1.23		
	ϕ_{cc}	=	0.882		
Factored limit state stress	ϕF_L	=	45.76	MPa	
2. Sections not subject to torsional or torsional-flexural buckling					... 3.4.8.2
Largest slenderness ratio for flexural buckling	kL/r	=	115.37		
3.4.10 Uniform compression in components of columns, gross section - flat plates					
1. Uniform compression in components of columns, gross section - flat plates with both edges supported					
	k_1	=	0.35		
Max. distance between toes of fillets of supporting elements for plate	b'	=	98		
	t	=	2	mm	
Slenderness	b/t	=	49		
Limit 1	S_1	=	12.34		
Limit 2	S_2	=	32.87		
Factored limit state stress	ϕF_L	=	114.67	MPa	
Most adverse compressive limit state stress	F_a	=	45.76	MPa	
Most adverse tensile limit state stress	F_a	=	222.70	MPa	
Most adverse compressive & Tensile capacity factor	f_a/F_a	=	0.21		PASS
BENDING - IN-PLANE					
3.4.15 Compression in beams, extreme fibre, gross section rectangular tubes, box sections					
Unbraced length for bending	L_b	=	4000	mm	
Second moment of area (weak axis)	I_y	=	1163844	mm ⁴	
Torsion modulus	J	=	1505792.3	mm ³	
Elastic section modulus	Z	=	20704.965	mm ³	
Slenderness	S	=	125.12		
Limit 1	S_1	=	0.39		



Civil & Structural Engineering Design Services Pty. Ltd.

Limit 2	S_2	=	1695.86		
Factored limit state stress	ϕF_L	=	204.73 MPa		3.4.15(2)
3.4.17 Compression in components of beams (component under uniform compression), gross section - flat plates with both edges supported					
	k_1	=	0.5		T3.3(D)
	k_2	=	2.04		T3.3(D)
Max. distance between toes of fillets of supporting elements for plate	b'	=	98 mm		
	t	=	2 mm		
Slenderness	b/t	=	49		
Limit 1	S_1	=	12.34		
Limit 2	S_2	=	46.95		
Factored limit state stress	ϕF_L	=	103.05 MPa		
Most adverse in-plane bending limit state stress	F_{bx}	=	103.05 MPa		
Most adverse in-plane bending capacity factor	f_{bx}/F_{bx}	=	0.00	PASS	
BENDING - OUT-OF-PLANE					
<i>NOTE: Limit state stresses, ϕF_L are the same for out-of-plane bending (doubly symmetric section)</i>					
Factored limit state stress	ϕF_L	=	103.05 MPa		
Most adverse out-of-plane bending limit state stress	F_{by}	=	103.05 MPa		
Most adverse out-of-plane bending capacity factor	f_{by}/F_{by}	=	0.09	PASS	
COMBINED ACTIONS					
4.1.1 Combined compression and bending					
	F_a	=	45.76 MPa		4.1.1(2)
	F_{ao}	=	114.67 MPa	... 3.4.8	
	F_{bx}	=	103.05 MPa	... 3.4.10	
	F_{by}	=	103.05 MPa	... 3.4.17	
				... 3.4.17	



Civil & Structural Engineering Design Services Pty. Ltd.

$f_a/F_a = 0.212$					
Check: $f_a/F_a + f_{bx}/F_{bx} + f_{by}/F_{by} \leq 1.0$... 4.1.1 (3)
i.e. $0.31 \leq 1.0$				PASS	
SHEAR					
3.4.24 Shear in webs (Major Axis)					
					... 4.1.1(2)
Clear web height	h	=	81	mm	
	t	=	2	mm	
Slenderness	h/t	=	40.5		
Limit 1	S_1	=	29.01		
Limit 2	S_2	=	59.31		
Factored limit state stress	ϕF_L	=	119.46	MPa	
Stress From Shear force	f_{sx}	=	V/A_w		
			0.11	MPa	
3.4.25 Shear in webs (Minor Axis)					
Clear web height	b	=	98	mm	
	t	=	2	mm	
Slenderness	b/t	=	49		
Factored limit state stress	ϕF_L	=	110.86	MPa	
Stress From Shear force	f_{sy}	=	V/A_w		
			0.25	MPa	

6.6 Intermediate Purlin

NAME	SYMBOL	VALUE	UNIT	NOTES	REF
60X60X2	Intermediate Purlin				
Alloy and temper	6061-T6				AS1664. 1
Tension	F_{tu}	=	262	MPa	Ultimate
	F_{ty}	=	241	MPa	Yield
Compression	F_{cy}	=	241	MPa	
Shear	F_{su}	=	165	MPa	Ultimate
	F_{sy}	=	138	MPa	Yield
Bearing	F_{bu}	=	551	MPa	Ultimate



Civil & Structural Engineering Design Services Pty. Ltd.

	F_{by}	=	386	MPa	Yield	
Modulus of elasticity	E	=	70000	MPa	Compressive	
	k_t	=	1.0			
	k_c	=	1.0			T3.4(B)
FEM ANALYSIS RESULTS						
Axial force	P	=	0.799	kN	compression	
	P	=	0	kN	Tension	
In plane moment	M_x	=	1.1153	kNm		
Out of plane moment	M_y	=	0.0107	kNm		
DESIGN STRESSES						
Gross cross section area	A_g	=	464	mm ²		
In-plane elastic section modulus	Z_x	=	8681.955 6	mm ³		
Out-of-plane elastic section mod.	Z_y	=	8681.955 6	mm ³		
Stress from axial force	f_a	=	P/A_g			
		=	1.72	MPa	compression	
		=	0.00	MPa	Tension	
Stress from in-plane bending	f_{bx}	=	M_x/Z_x			
		=	128.46	MPa	compression	
Stress from out-of-plane bending	f_{by}	=	M_y/Z_y			
		=	1.23	MPa	compression	
Tension						
3.4.3 Tension in rectangular tubes						
	ϕF_L	=	228.95	MPa		
		O				
	ϕF_L	=	222.70	MPa		
COMPRESSION						
3.4.8 Compression in columns, axial, gross section						
1. General						... 3.4.8.1
Unsupported length of member	L	=	5000	mm		
Effective length factor	k	=	1			
Radius of gyration about buckling axis (Y)	r_y	=	23.69	mm		



Civil & Structural Engineering Design Services Pty. Ltd.

Radius of gyration about buckling axis (X)	r_x	=	23.69	mm		
Slenderness ratio	kL_b/ry	=	211.04			
Slenderness ratio	kL/rx	=	211.04			
Slenderness parameter	λ	=	3.94			
	D_c^*	=	90.3			
	S_1^*	=	0.33			
	S_2^*	=	1.23			
	ϕ_{cc}	=	0.950			
Factored limit state stress	ϕF_L	=	14.74	MPa		
<i>2. Sections not subject to torsional or torsional-flexural buckling</i>						... 3.4.8.2
Largest slenderness ratio for flexural buckling	kL/r	=	211.04			
3.4.10 Uniform compression in components of columns, gross section - flat plates						
<i>1. Uniform compression in components of columns, gross section - flat plates with both edges supported</i>						... 3.4.10.1
	k_1	=	0.35			T3.3(D)
Max. distance between toes of fillets of supporting elements for plate	b'	=	56			
	t	=	2	mm		
Slenderness	b/t	=	28			
Limit 1	S_1	=	12.34			
Limit 2	S_2	=	32.87			
Factored limit state stress	ϕF_L	=	185.00	MPa		
Most adverse compressive limit state stress	F_a	=	14.74	MPa		
Most adverse tensile limit state stress	F_a	=	222.70	MPa		
Most adverse compressive & Tensile capacity factor	f_a/F_a	=	0.12		PASS	
BENDING - IN-PLANE						
3.4.15 Compression in beams, extreme fibre, gross section rectangular tubes, box sections						
Unbraced length for	L_b	=	5000	mm		



Civil & Structural Engineering Design Services Pty. Ltd.

bending					
Second moment of area (weak axis)	I_y	=	260458.6 7	mm ⁴	
Torsion modulus	J	=	390224	mm ³	
Elastic section modulus	Z	=	8681.955 6	mm ³	
Slenderness	S	=	272.33		
Limit 1	S ₁	=	0.39		
Limit 2	S ₂	=	1695.86		
Factored limit state stress	ϕF_L	=	192.53	MPa	3.4.15(2)
3.4.17 Compression in components of beams (component under uniform compression), gross section - flat plates with both edges supported					
	k ₁	=	0.5		T3.3(D)
	k ₂	=	2.04		T3.3(D)
Max. distance between toes of fillets of supporting elements for plate	b'	=	56	mm	
	t	=	2	mm	
Slenderness	b/t	=	28		
Limit 1	S ₁	=	12.34		
Limit 2	S ₂	=	46.95		
Factored limit state stress	ϕF_L	=	185.00	MPa	
Most adverse in-plane bending limit state stress	F _{bx}	=	185.00	MPa	
Most adverse in-plane bending capacity factor	f _{bx} /F _{bx}	=	0.69		PASS
BENDING - OUT-OF-PLANE					
NOTE: Limit state stresses, ϕF_L are the same for out-of-plane bending (doubly symmetric section)					
Factored limit state stress	ϕF_L	=	185.00	MPa	
Most adverse out-of-plane bending limit state stress	F _{by}	=	185.00	MPa	
Most adverse out-of-plane bending capacity factor	f _{by} /F _{by}	=	0.01		PASS



Civil & Structural Engineering Design Services Pty. Ltd.

COMBINED ACTIONS					
4.1.1 Combined compression and bending					4.1.1(2)
	F_a	=	14.74	MPa	... 3.4.8
	F_{ao}	=	185.00	MPa	... 3.4.10
	F_{bx}	=	185.00	MPa	... 3.4.17
	F_{by}	=	185.00	MPa	... 3.4.17
	f_a/F_a	=	0.117		
Check:	$f_a/F_a + f_{bx}/F_{bx} + f_{by}/F_{by} \leq 1.0$... 4.1.1 (3)
i.e.	0.82	≤	1.0	PASS	
SHEAR					
3.4.24 Shear in webs (Major Axis)					4.1.1(2)
Clear web height	h	=	56	mm	
	t	=	2	mm	
Slenderness	h/t	=	28		
Limit 1	S_1	=	29.01		
Limit 2	S_2	=	59.31		
Factored limit state stress	ϕF_L	=	131.10	MPa	
Stress From Shear force	f_{sx}	=	V/A_w		
			0.13	MPa	
3.4.25 Shear in webs (Minor Axis)					
Clear web height	b	=	56	mm	
	t	=	2	mm	
Slenderness	b/t	=	28		
Factored limit state stress	ϕF_L	=	131.10	MPa	
Stress From Shear force	f_{sy}	=	V/A_w		
			0.07	MPa	

6.7 Brace

NAME	SYMBOL	VALUE	UNIT	NOTES	REF
60X60X2	Brace				
Alloy and temper	6061-T6				AS1664.



Civil & Structural Engineering Design Services Pty. Ltd.

						1
Tension	F_{tu}	=	262	MPa	Ultimate	T3.3(A)
	F_{ty}	=	241	MPa	Yield	
Compression	F_{cy}	=	241	MPa		
	F_{su}	=	165	MPa	Ultimate	
Shear	F_{sy}	=	138	MPa	Yield	
	F_{bu}	=	551	MPa	Ultimate	
Bearing	F_{by}	=	386	MPa	Yield	
Modulus of elasticity	E	=	70000	MPa	Compressive	T3.4(B)
	k_t	=	1.0			
	k_c	=	1.0			
FEM ANALYSIS RESULTS						
Axial force	P	=	2.706	kN	compression	
	P	=	0	kN	Tension	
In plane moment	M_x	=	0	kNm		
Out of plane moment	M_y	=	0.0506	kNm		
DESIGN STRESSES						
Gross cross section area	A_g	=	464	mm ²		
In-plane elastic section modulus	Z_x	=	8681.955	mm ³		
Out-of-plane elastic section mod.	Z_y	=	8681.955	mm ³		
Stress from axial force	f_a	=	P/A_g			
		=	5.83	MPa	compression	
		=	0.00	MPa	Tension	
Stress from in-plane bending	f_{bx}	=	M_x/Z_x			
		=	0.00	MPa	compression	
Stress from out-of-plane bending	f_{by}	=	M_y/Z_y			
		=	5.83	MPa	compression	
Tension						
3.4.3 Tension in rectangular tubes						
	ϕF_L	=	228.95	MPa		
		O				
	ϕF_L	=	222.70	MPa		
COMPRESSION						



Civil & Structural Engineering Design Services Pty. Ltd.

3.4.8 Compression in columns, axial, gross section

1. General

... 3.4.8.1

Unsupported length of member	L	=	5640	mm
Effective length factor	k	=	1	
Radius of gyration about buckling axis (Y)	r_y	=	23.69	mm
Radius of gyration about buckling axis (X)	r_x	=	23.69	mm
Slenderness ratio	kLb/r_y	=	238.05	
Slenderness ratio	kL/r_x	=	238.05	
Slenderness parameter	λ	=	4.45	
	D_c^*	=	90.3	
	S_1^*	=	0.33	
	S_2^*	=	1.23	
	ϕ_{cc}	=	0.950	
Factored limit state stress	ϕF_L	=	11.58	MPa

2. Sections not subject to torsional or torsional-flexural buckling

... 3.4.8.2

Largest slenderness ratio for flexural buckling	kL/r	=	238.05	
---	--------	---	--------	--

3.4.10 Uniform compression in components of columns, gross section - flat plates

1. Uniform compression in components of columns, gross section - flat plates with both edges supported

...
3.4.10.1
T3.3(D)

	k_1	=	0.35	
Max. distance between toes of fillets of supporting elements for plate	b'	=	56	
	t	=	2	mm
Slenderness	b/t	=	28	
Limit 1	S_1	=	12.34	
Limit 2	S_2	=	32.87	
Factored limit state stress	ϕF_L	=	185.00	MPa

Most adverse compressive limit state stress	F_a	=	11.58	MPa
Most adverse tensile limit state stress	F_a	=	222.70	MPa



Civil & Structural Engineering Design Services Pty. Ltd.

Most adverse compressive & Tensile capacity factor	f_a/F_a	=	0.50	PASS	
BENDING - IN-PLANE					
3.4.15 Compression in beams, extreme fibre, gross section rectangular tubes, box sections					
Unbraced length for bending	L_b	=	5640 mm		
Second moment of area (weak axis)	I_y	=	260458.6 mm ⁴		
Torsion modulus	J	=	390224 mm ³		
Elastic section modulus	Z	=	8681.955 mm ³		
Slenderness	S	=	307.19		
Limit 1	S_1	=	0.39		
Limit 2	S_2	=	1695.86		
Factored limit state stress	ϕF_L	=	190.18 MPa		3.4.15(2)
3.4.17 Compression in components of beams (component under uniform compression), gross section - flat plates with both edges supported					
	k_1	=	0.5		T3.3(D)
	k_2	=	2.04		T3.3(D)
Max. distance between toes of fillets of supporting elements for plate	b'	=	56 mm		
	t	=	2 mm		
Slenderness	b/t	=	28		
Limit 1	S_1	=	12.34		
Limit 2	S_2	=	46.95		
Factored limit state stress	ϕF_L	=	185.00 MPa		
Most adverse in-plane bending limit state stress	F_{bx}	=	185.00 MPa		
Most adverse in-plane bending capacity factor	f_{bx}/F_{bx}	=	0.00	PASS	
BENDING - OUT-OF-PLANE					
NOTE: Limit state stresses, ϕF_L are the same for out-of-plane bending (doubly symmetric section)					



Civil & Structural Engineering Design Services Pty. Ltd.

Factored limit state stress	ϕF_L	=	185.00	MPa		
Most adverse out-of-plane bending limit state stress	F_{by}	=	185.00	MPa		
Most adverse out-of-plane bending capacity factor	f_{by}/F_{by}	=	0.03		PASS	
COMBINED ACTIONS						
4.1.1 Combined compression and bending						
	F_a	=	11.58	MPa		4.1.1(2)
	F_{ao}	=	185.00	MPa		... 3.4.8
	F_{bx}	=	185.00	MPa		... 3.4.10
	F_{by}	=	185.00	MPa		... 3.4.17
	f_a/F_a	=	0.504			... 3.4.17
Check:	$f_a/F_a + f_{bx}/F_{bx} + f_{by}/F_{by} \leq 1.0$... 4.1.1 (3)
i.e.	0.54	\leq	1.0		PASS	
SHEAR						
3.4.24 Shear in webs (Major Axis)						
						4.1.1(2)
Clear web height	h	=	56	mm		
	t	=	2	mm		
Slenderness	h/t	=	28			
Limit 1	S_1	=	29.01			
Limit 2	S_2	=	59.31			
Factored limit state stress	ϕF_L	=	131.10	MPa		
Stress From Shear force	f_{sx}	=	V/A_w			
			0.13	MPa		
3.4.25 Shear in webs (Minor Axis)						
Clear web height	b	=	56	mm		
	t	=	2	mm		
Slenderness	b/t	=	28			
Factored limit state stress	ϕF_L	=	131.10	MPa		
Stress From Shear force	f_{sy}	=	V/A_w			
			0.08	MPa		



Civil & Structural Engineering Design Services Pty. Ltd.

7 Summary

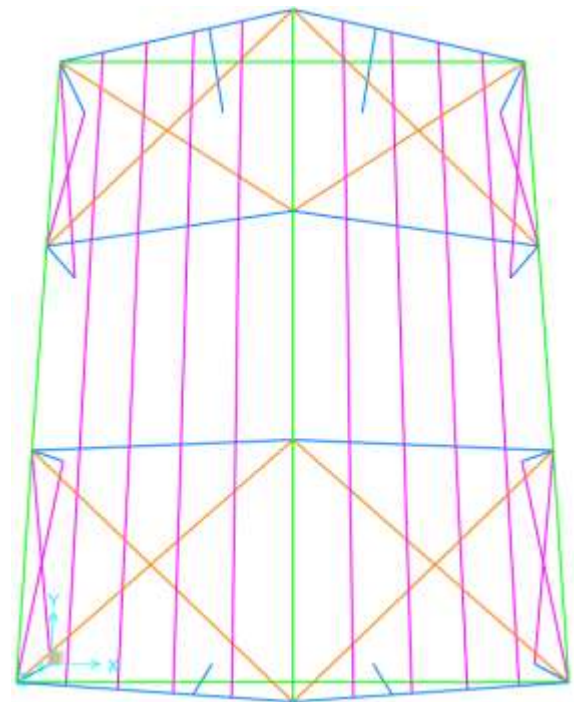
7.1 Conclusions

- The 12m x 15m Event Standard Tent structure as specified has been analyzed with a conclusion that it has the capacity to withstand wind speeds up to and including **80km/hr**.
- For forecast winds in excess of **80km/hr** – all fabric shall be removed from the frames, and the structure should be completely dismantled.
- Wall cross bracing as well as roof cable bracing are required at each end bay and every third bay in between to resist against lateral movement due to wind direction2.
- For uplift due to 80km/hr, 4.5 kN (650kg) holding down weight/per leg for upright support is required.
- For uplift due to 80km/hr, 3.5 kN (450kg) hold down weight/ per leg for gable pole is required.
- The bearing pressure of soil should be clarified and checked by an engineer prior to any construction for considering foundation and base plate.
- Bracing Cables are required to have the minimum tensile strength (SWL) equal to 15kN.
- It is important to use 60x60x2 profile for all intermediate purlins with spacing not exceeding 1300mm. This means 8 intermediate purlins are required per bay (as illustrated below).**
- It is important to use 120x68x3 profile for all gable poles.**

MEMBER(S)	Section	b	d	t
		mm	mm	mm
Rafter	120X68X3	68	120	3
Upright Support	120X68X3	68	120	3
Gable Pole	120X68X3	68	120	3
Ridge & Eave Purlin	85X102X2	102	85	2
Gable Beam	85X102X2	102	85	2
Intermediate Purlin	60X60X2	60	60	2
Brace	60	60	60	2

Yours faithfully,

E.A. Bennett M.I.E. Aust. NPER 198230





Civil & Structural Engineering Design Services Pty. Ltd.

8 Appendix A – Base Anchorage Requirements

12m x 12m Event Standard Tent:

Tent Span	Sile Type	Required Weight Per Leg
12 m	A	650kg
	B	650kg
	C	650kg
	D	650kg
	E	600kg
10 m	A	600kg
	B	600kg
	C	600kg
	D	600kg
	E	600kg
8 m	A	500kg
	B	500kg
	C	500kg
	D	500kg
	E	500kg
6 m	A	450kg
	B	450kg
	C	450kg
	D	450kg
	E	450kg

Definition of Soil Types:

Type A : Loose sand such as dunal sand. Uncompacted site filling may also be included in this soil type.

Type B : Medium to stiff clays or silty clays

Type C: Moderately compact sand or gravel eg. of alluvial origin.

Type D : Compact sand and gravel eg. Weathered sandstone or compacted quarry rubble hardstand

Type E : Concrete slab on ground. Number of dyna bolts and slab thickness to be designed.



9 Appendix B – Hold Down Method Details

